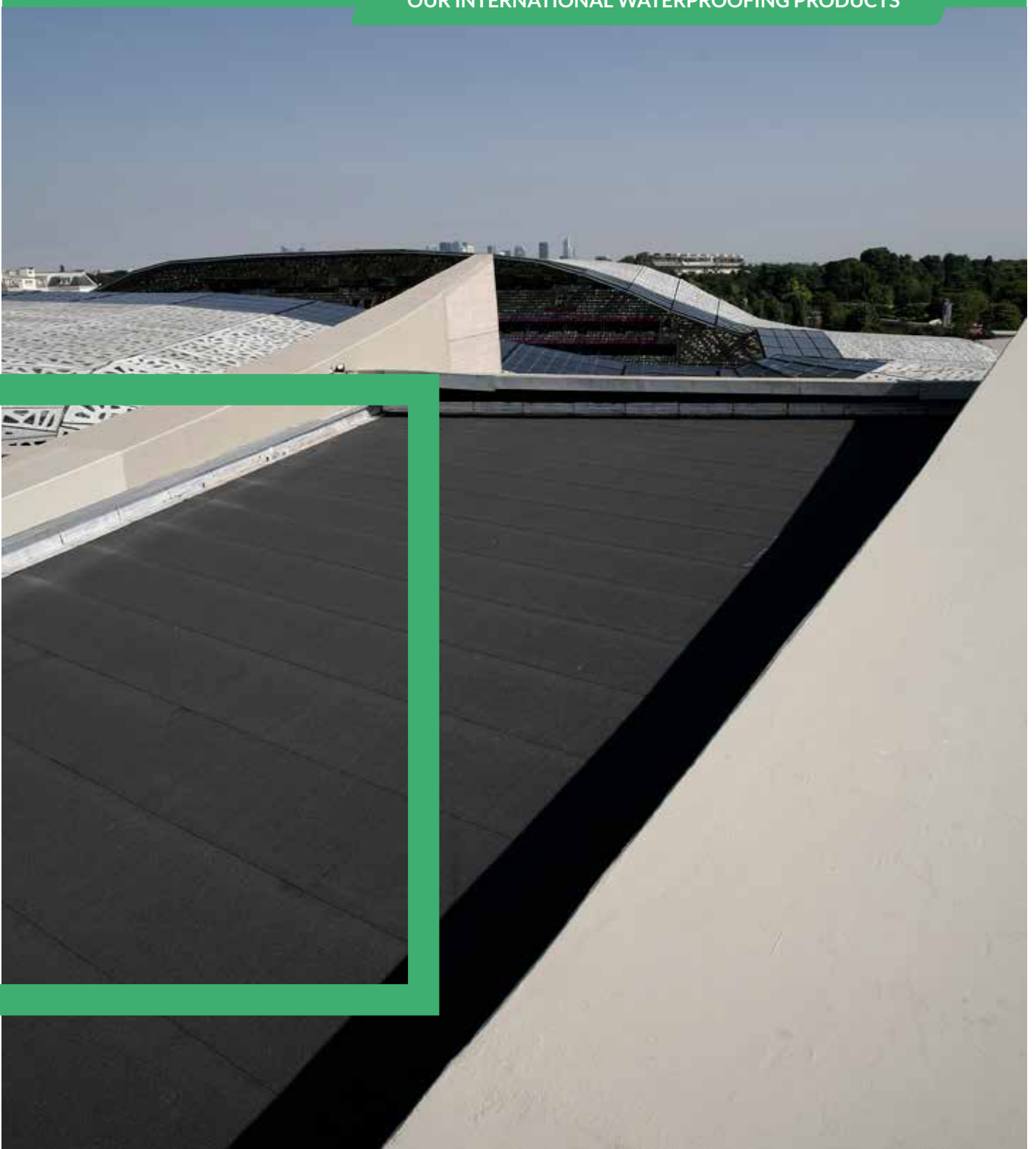


# HORIZON

OUR INTERNATIONAL WATERPROOFING PRODUCTS



 **AXTER**  **COLETANCHE**

## WATERPROOFING SOLUTIONS

BITUMINOUS

LIQUID

ECO-FRIENDLY

# IKO-AXTER, A KEY PLAYER IN THE INTERNATIONAL WATERPROOFING MARKET

A major player with a long standing, reputable history providing outstanding bituminous waterproofing membrane, **IKO-AXTER** designs and manufactures bituminous waterproofing membranes for flat and sloped roof terraces, as well as public works and civil engineering structures, in northern France.

IKO-AXTER is a benchmark for all building professionals, thanks not only to its products, recognized for their reliability, performance and innovation, but also to the technical expertise of its teams and its best in class service, at the heart of its development.

Today, IKO-AXTER is reaffirming its position with a wide range of references in over 70 countries and sales of over €160 million, 40% of which are international.



## IKO-AXTER STATISTICS

**7**  
locations  
worldwide

**230**  
employees



# HORIZON PORTFOLIO

A GLOBAL RANGE TO RESPOND EFFECTIVELY TO EVERY PROBLEM:



**160**

million euros in sales

**40%**

of sales outside France

More than

**24**

million m<sup>2</sup> of membranes manufactured each year

**5**

French and international quality labels

# PREPARATION BEFORE THE WORKSITE

## BEST PRACTICE FOR YOUR SAFETY,

wear personal protective equipment and equip yourself with the right tools.

- Reinforced shoes
- Safety gloves
- Long sleeves
- Reinforced helmet protection
- Etc.



# WATERPROOFING, THE CORE OF OUR BUSINESS

IKO-AXTER offers a wide range of waterproofing systems to meet all your waterproofing needs.

## WE CAN ACCOMMODATE ANY DESIGN BRIEF

### THE LOAD-BEARING ELEMENT



Concrete



Wood



Steel

### ROOF INSULATION

■ PSE

■ PIR

■ PUR

■ WELDABLE

### DESTINATION

■ ACCESSIBLE

■ INACCESSIBLE AND/OR  
TECHNICAL

### FINISH

■ SELF-PROTECTED

■ ADDED PROTECTION (SLABS, TILES)

■ GREEN



# PRIMER

## IKOPRIM BE3

### COLD IMPREGNATION COATING BASED ON BITUMEN PRIMER



#### FEATURES

- **COLOUR** : brown
- **USAGE** :
  - Waterproofing of underground structures and flat roofs.
  - Impregnation of concrete, metal or wood substrates intended to receive bituminous membranes.

#### APPLICATION

IKOPRIM is applied cold using a brush, roller, or trowel, after checking the condition of the surfaces (e.g. loose particles) and treating joints and cracks.

Allow to dry completely before applying the waterproofing system (8 to 12 hours depending on weather conditions).

#### The composition of the primer layer varies depending on the type of substrate:

- For porous substrates (e.g. masonry walls), IKOPRIM must be diluted with 50% clean, cold water, i.e. 300 g of pure product/m<sup>2</sup>/layer.

#### LOGISTICS

- Available in 20 kg cans, 30 cans per pallet.



#### FIND OUT MORE

Do not apply IKOPRIM at temperatures below 5°C or to wet decks. Surface should be dry and clean. IKOPRIM should only be diluted with water (any other solvent is prohibited).

Stir well before use.

# VERNIS ANTAC

## READY-TO-USE SUPERSTABILIZED BITUMEN PRIMER



### FEATURES

- **USE:** For priming concrete, metal or wood substrates intended for bituminous membranes.
- **ADVANTAGES:** Quick-drying, ready-to-use. The 30L full-opening can allows direct use of the roller.

### APPLICATION

VERNIS ANTAC is applied by brush or roller to a dry, clean substrate (150 to 300 g/m<sup>2</sup>). Allow to dry completely before applying the waterproofing (60 to 90 minutes depending on weather conditions).

### LOGISTICS

- 5L or 30L metal cans or 500 mL aerosol can (box of 6).
- 140 quantity/drums/cans (5L), or 24 quantity/cans/drums (30L), or 84 boxes of 12 aerosols.
- In a cool, ventilated place, away from heat and away from any source of flame or spark.

### CLEANING

Tools can be cleaned with petroleum solvents. (e.g.: White Spirit).



### FIND OUT MORE

VERNIS ANTAC does not contain toluene.

For your own safety, you are advised to wear a suitable mask in confined spaces.

It is essential to stick to the recommended use. Overuse could impair the adhesion of the membrane.

**Do not pour residues down the drain.**

# INSULATION AND ADHESIVES

## HYRASTIK

### ONE-COMPONENT, LIQUID, EXPANDING POLYURETHANE ADHESIVE



#### APPLICATION

Application is by cords (~50 g/mL), spaced 30 cm apart, with a minimum of 2 lines of adhesive per insulating panel. Insulating panels should be laid immediately after glue application, before a skin forms on the surface of the lines. Apply firm pressure to the insulation panels to ensure adhesion.

Drying time is 2 to 6 hours, depending on temperature and humidity conditions. The glue's expansion allows it to compensate for any unevenness in the substrate, within the limits of DTU 20.12 specifications.

#### LOGISTICS

- Use: 200 to 250 g/m<sup>2</sup>.
- Maximum storage life: 9 months.
- Store in a cool, dry place, away from heat, in its original, hermetically sealed packaging.

#### FEATURES

- **COLOUR:** liquid honey like
- **USE:** for adhering insulation boards



#### FIND OUT MORE

Do not apply if the substrate temperature is below 5°C.

# IKO ENERTHERM ALU XL PRO



Subject to technical approval

## INSULATION BOARD

IKO enertherm ALU XL PRO is an insulation board with a 100% polyisocyanurate rigid foam core, coated on both sides with a gas-tight multilayer aluminium facing. Free from CFC, HCFC and HFC.

## FEATURES

- Thickness from 30 to 200 mm.
- Lightweight panels that are easy to handle, less volume for the same insulating power, quick and easy to install.
- Easy to handle and time saving versus other heavier weight insulation types
- High dimensional stability, resistance to deformation and resistance to compression.



## LOGISTICS

- Store in a dry place, away from bad weather (rain and sunshine).

## THERMAL RESISTANCE (M<sup>2</sup>·K/W) OF IKO ENERTHERM ALU XL PRO INSULATION BOARDS

THICKNESS (MM)		30	40	50	60	70	80	90
<b>THERMAL RESISTANCE</b>		<b>1.35</b>	<b>1.80</b>	<b>2.30</b>	<b>2.75</b>	<b>3.20</b>	<b>3.65</b>	<b>4.10</b>
1 200 x 600	m2 per pack	11.52	8.64	7.20	5.76	5.04	4.32	2.88
	m2 per pallet	115.20	86.40	72.00	57.60	50.40	43.20	40.32

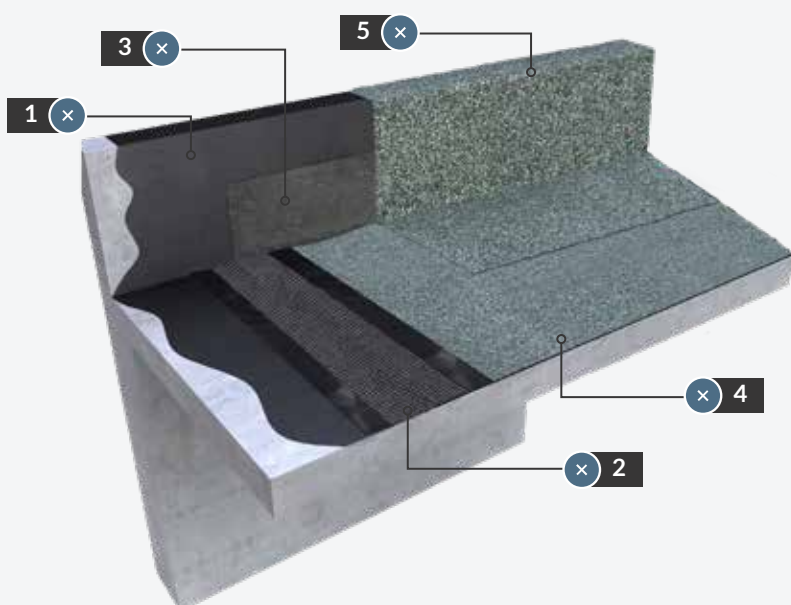
THICKNESS (MM)		100	110	120	130	140	160
<b>THERMAL RESISTANCE</b>		<b>4.60</b>	<b>5.05</b>	<b>5.50</b>	<b>5.95</b>	<b>6.45</b>	<b>7.35</b>
1 200 x 600	m2 per pack	3.60	2.88	2.88	2.16	2.16	1.44
	m2 per pallet	36.00	28.80	28.80	25.92	25.92	23.04

# SYSTEMS UNDER TECHNICAL APPROVAL

## SELF-PROTECTED INACCESSIBLE ROOF



Subject to technical approval



■ Solution up to 20 m<sup>2</sup>. If the surface area is larger than 20 m<sup>2</sup>, use the THERMECRAN semi-independent screen

### APPLICATION

#### 1/ IKOPRIM / VERNIS ANTAC

Cold application by brush, roller or trowel at a rate of 300 g/m<sup>2</sup>.

#### 2/ HYRÈNE-HYRANGER TS PY / HYRÈNE-HYRANGER TS PY GRÉSÉ (POLYESTER REINFORCEMENT)

Unroll the HYRÈNE-HYRANGER TS PY dry roll, position it and weld it in place.

Overlapping:

- 6 cm for longitudinal joints,
- 10 cm for transverse joints.

#### 3/ ÉQUERRE DE RENFORT (REINFORCEMENT LAYER)

Horizontally, weld the square to the first layer (minimum heel of 10 cm). Vertically, weld the square to the primer impregnated parapet.

#### 4/ HYRÈNE-HYRANGER 40 FP AR (GLASS FLEECE REINFORCEMENT)

Unroll the HYRÈNE-HYRANGER 40 FP AR roll, position it and then weld it to the first layer with staggered joints. At the end of the strip, embed the slate flakes with a hot trowel after heating slightly with a gas torch and weld over 15 cm.

#### 5/ FORCE 4000 S (POLYESTER REINFORCEMENT) / TERRAGUM A4.5 (NOT COVERED BY TECHNICAL APPROVAL)

Cut strips to a height of 15 cm from the heel to the vertical part (up to the run-off separator).

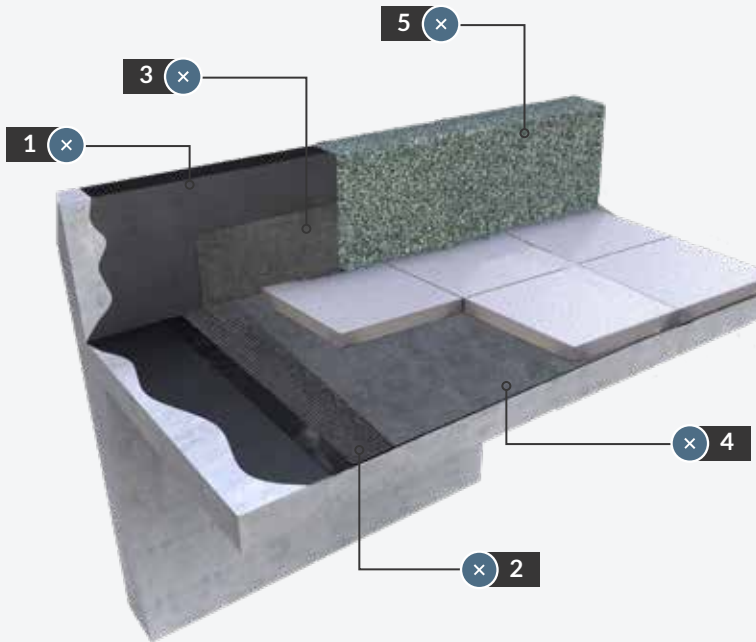
After embedding the flake, weld the heel onto HYRÈNE-HYRANGER 40 FP AR and, vertically, weld it to the parapet.



# CONCRETE SLABS ON ACCESSIBLE ROOF



Subject to technical approval



■ The solution is MAT 100 for independent installation.

## APPLICATION

### 1/ IKOPRIM / VERNIS ANTAC

Cold application by brush, roller or trowel at a rate of 300 g/m<sup>2</sup>.

### 2/ HYRÈNE-HYRANGER TS PY / HYRÈNE-HYRANGER TS PY GRÉSÉ (POLYESTER REINFORCEMENT)

Unroll the HYRÈNE-HYRANGER TS PY dry roll, position it and weld it in place.  
Overlapping:

- 6 cm for longitudinal joints,
- 10 cm for transverse joints.

### 3/ ÉQUERRE DE RENFORT (REINFORCEMENT LAYER)

Horizontally, weld the square to the first layer (minimum heel of 10 cm). Vertically, weld the square to the Primer-impregnated parapet.

### 4/ HYRÈNE-HYRANGER 25/25 TS (GLASS FLEECE REINFORCEMENT)

Unroll the HYRÈNE-HYRANGER 25/25 TS roll, position it and then weld it onto the first layer with staggered joints. Longitudinal overlaps are welded over 6 cm and end overlaps are welded over 10 cm.

### 5/ FORCE 4000 S (POLYESTER REINFORCEMENT) / TERRAGUM A4.5 (NOT COVERED BY TECHNICAL APPROVAL)

Cut strips to a height of 15 cm from the heel to the vertical part (up to the run-off separator).

Weld the heel to the HYRÈNE-HYRANGER 25/25 TS and, vertically, weld to the parapet.

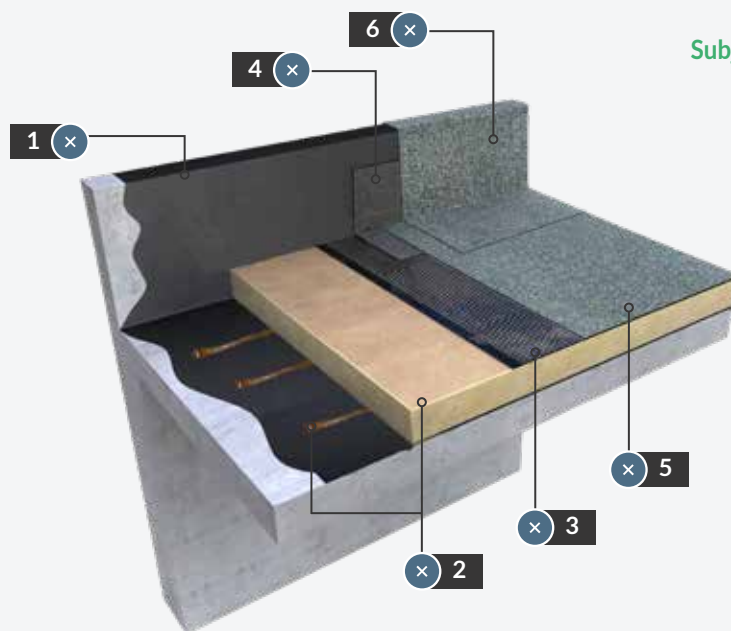


# SYSTEMS UNDER TECHNICAL APPROVAL

## INACCESSIBLE SELF-PROTECTED ROOF WITH INSULATION



Subject to technical approval



### APPLICATION

#### 1/ IKOPRIM / VERNIS ANTAC

Cold application using a brush, roller, or trowel at a rate of 300 g/m<sup>2</sup>.

#### 2/ INSULATION + ADHESIVES

Glue the insulation boards (PUR / PIR / PSE) with HYRA STIK in staggered joints (see page 9).

#### 3/ HYRÈNE-HYRANGER SPOT ST (POLYESTER REINFORCEMENT)

Self-adhesive application: the release film must be removed before applying HYRÈNE-HYRANGER SPOT ST to the substrate.

The width of the longitudinal overlap joint is 70 mm.

#### 4/ ÉQUERRE DE RENFORT (REINFORCING ANGLE)

Horizontally, weld the square to the first layer (minimum heel of 10 cm). Vertically, weld the square to the Primer-impregnated parapet.

#### 5/ HYRÈNE-HYRANGER 40 FP AR (GLASS FLEECE REINFORCEMENT)

Unroll the HYRÈNE-HYRANGER 40 FP AR roll, position it, then weld it to the HYRÈNE-HYRANGER SPOT ST with staggered joints. At the end of the roll, embed the slate flakes with a hot trowel after lightly heating with a gaz torch, and weld over 15 cm.

#### AVAILABLE COLOURS:



white, grey, green, red

#### 6/ FORCE 4000 S (POLYESTER REINFORCEMENT) / TERRAGUM A4.5 (NOT COVERED BY TECHNICAL APPROVAL)

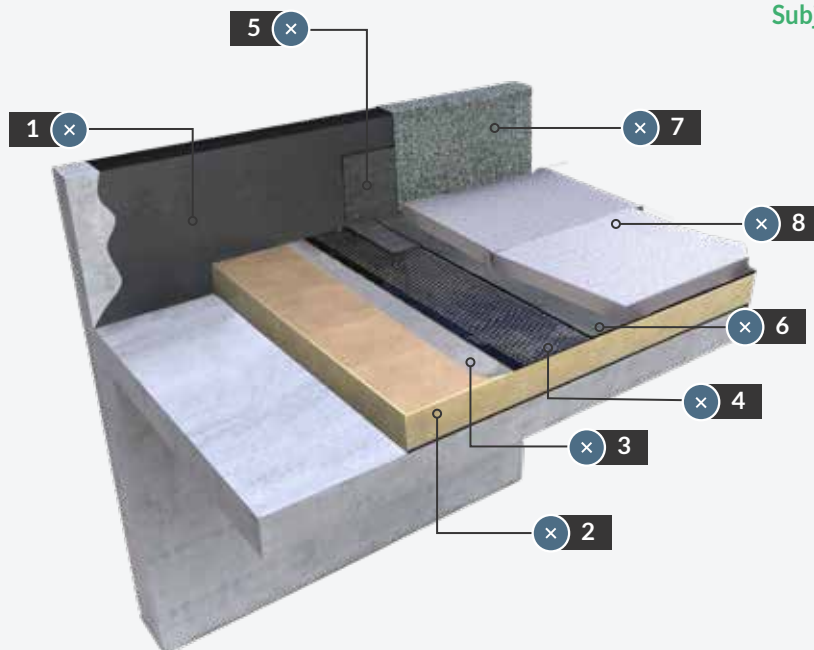
Cut strips to a height of 15 cm from the heel to the vertical part (up to the run-off separator).

After embedding the flake, weld the heel onto HYRÈNE-HYRANGER 40 FP AR and, vertically,

# ACCESSIBLE ROOF WITH INSULATION



Subject to technical approval



## APPLICATION

### 1/ ÉQUERRE DE RENFORT (REINFORCING ANGLE)

Vertically, weld the angle to the primed parapet over a height equal to the thickness of the insulation + 6 cm.

### 2/ INSULATION

Lay the insulation boards (PUR / PIR / PSE) loosely and edge-to-edge, with staggered joints.

### 3/ MAT 100

Unroll dry with a 10 cm overlap.

### 4/ HYRÈNE-HYRANGER TS PY / HYRÈNE-HYRANGER TS PY GRÉSÉ

Unroll the HYRÈNE-HYRANGER TS PY dry roll and position it. Only the overlap joints are welded:

- 6 cm for longitudinal joints,
- 10 cm for transverse joints.

### 5/ ÉQUERRE DE RENFORT (REINFORCING ANGLE)

Horizontally, weld the square to the first layer (minimum heel of 10 cm). Vertically, weld the square to the primer-impregnated parapet.

### 6/ HYRÈNE-HYRANGER 25/25 TS

Unroll the HYRÈNE-HYRANGER 25/25 TS roll, position it and then weld it onto the first layer with staggered joints. Longitudinal overlaps are welded over 6 cm and end overlaps are welded over 10 cm.

### 7/ FORCE 4000 S

Cut strips to a height of 15 cm from the heel to the vertical part (up to the run-off separator).

Weld the heel to the HYRÈNE-HYRANGER 25/25 TS and, vertically, weld to the parapet.

### 8/ HEAVY-DUTY PROTECTION

# SYSTEMS UNDER TECHNICAL APPROVAL

## PLANTED ROOF OR GARDEN



### APPLICATION

Subject to technical approval

#### 1/ IKOPRIM / VERNIS ANTAC

Cold application by brush, roller or trowel at a rate of 300 g/m<sup>2</sup>.

#### 2/ HYRÈNE-HYRANGER 25/25 TS (GLASS FLEECE REINFORCEMENT)

Weld the membrane to the impregnated concrete. Subsequent strips are welded at staggered joints, with longitudinal and end overlaps welded over 6 cm.

#### 3/ HYRÈNE-HYRANGER 35 PY RGH (POLYESTER REINFORCEMENT)

Cut HYRÈNE-HYRANGER 35 PY RGH strips to a height of 10 cm from the heel to the vertical part (up to the run-off separator).

Weld the heel to the HYRÈNE-HYRANGER 25/25 TS and weld vertically to the impregnated parapet. The overlap between strips is 6 cm.

#### 4/ FORCE 3000 TRAFIC (POLYESTER REINFORCEMENT)

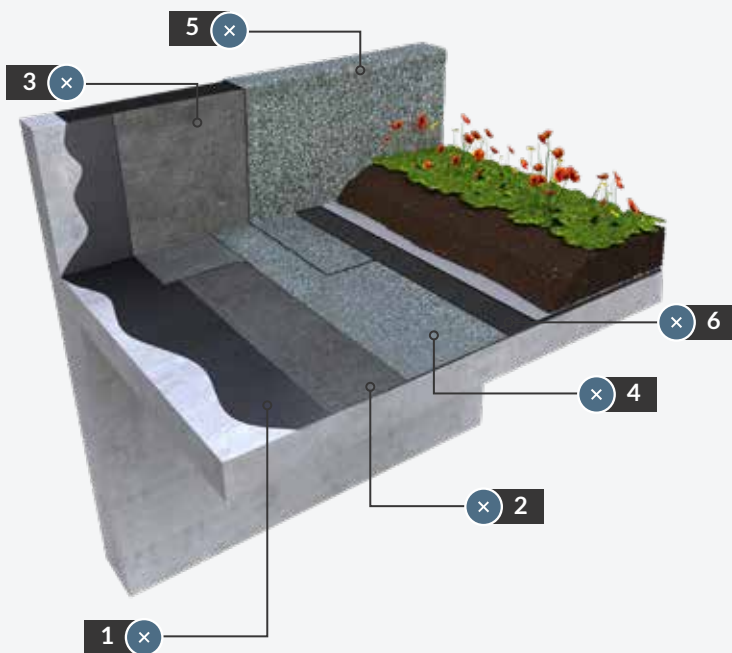
Unroll the FORCE 3000 TRAFIC roll, position it and then weld it to the HYRÈNE-HYRANGER 25/25 TS with staggered joints. Longitudinal and transverse joints are 10 cm.

#### 5/ FORCE 3000 TRAFIC (POLYESTER REINFORCEMENT)

Cut FORCE 3000 TRAFIC strips to a height of 15 cm from the heel to the vertical part (up to the run-off separator). After embedding the flake, weld the heel to the FORCE 3000 TRAFIC and, vertically, weld to the parapet.

#### 6/ DELTA TERRAXX / DRAIN AND FILTER AXTER

The DRAIN is laid edge to edge, loosely over the drain layer. The filter layer is unrolled onto the drain. If DELTA TERRAXX, it is unrolled freely on the waterproofing.

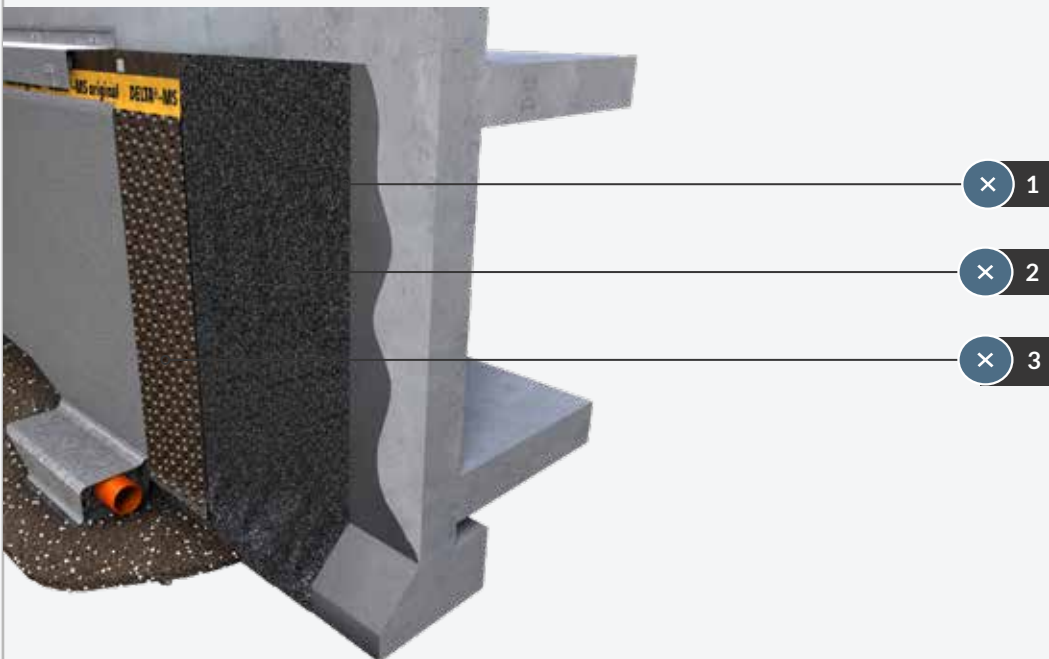


# BASEMENT WALLS



Subject to technical approval

## ONE-LAYER SYSTEM



## APPLICATION

### 1/ IKOPRIM / VERNIS

Apply cold with a brush, roller or trowel at a rate of 300 g/m<sup>2</sup>.

### 2/ FORCE 3000 TRAFIC OR FORCE 4000 TRAFIC (POLYESTER REINFORCEMENT)

Unroll the roll, position it and then weld it to the staggered joint substrate. Longitudinal and transverse joints are 10 cm. mechanical fastenings must be applied at the head lap of the membrane at every 25 cm.

### 3/ DELTA MS PROTECTION OR EQUIVALENT

Protection fastened at the top with fastenings every 50 cm. If there is an overlap, then overlap by 5 cells (bridge the joints with cold adhesive tape).

# FORCE® RANGE

## HIGH-PERFORMANCE AND VERSATILE BITUMINOUS MEMBRANES

### WHAT'S THE SECRET BEHIND FORCE® BITUMINOUS MEMBRANES? **UNMATCHED VERSATILITY AND DURABILITY!**

The high-performance SBS elastomeric binder ensures exceptional resistance and long service life across the FORCE® waterproofing systems.

Thanks to their excellent mechanical properties, these membranes adapt to all types of substrates.

#### HIGH RESISTANCE IN ALL CLIMATES

- Resistant to cracking thanks to the elasticity of the SBS elastomeric binder
- Resistant to wind uplift due to its excellent mechanical strength
- Resistant to puncture: I5 classification

#### EXCEPTIONAL VERSATILITY

Available in multiple finishes to meet the technical requirements of building standards, the membrane is suitable for both new construction and refurbishment projects, and adapts to all types of substrates and insulation materials.

#### FAST AND COST-EFFECTIVE INSTALLATION LAYER

Thanks to its unique design, a single layer is enough.



# FORCE®

## WELDABLE SELF-PROTECTED ONE-LAYER SOLUTION FORCE® 4000 S MEMBRANE



French Technical Approval  
DTA FORCE®  
Broof (t3) fire classification\*

### FEATURES

#### LOAD-BEARING ELEMENTS



Concrete



Steel



Wood

#### TYPES OF WORK



New



Refurbishment

#### FINISH

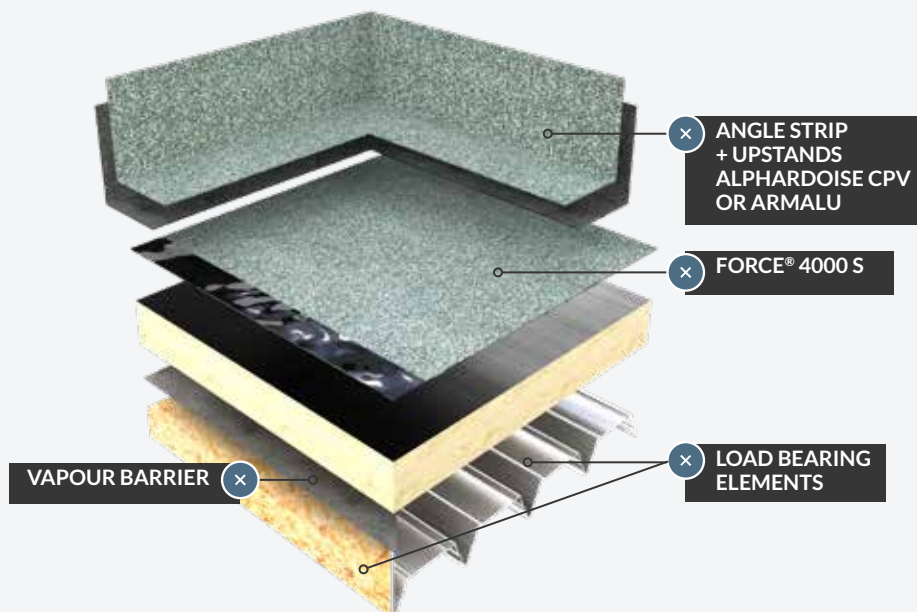
Self-protected inaccessible flat roofs, technical roofs, or roofs with technical zones (with a slope  $\geq 1\%$ )

#### APPLICATION

Fully welded

#### COLOURS

Grey, black, red, green, white



# FORCE® DALLE

SINGLE-LAYER SOLUTION

UNDER GRAVEL AND PAVING SLABS ON PEDESTALS

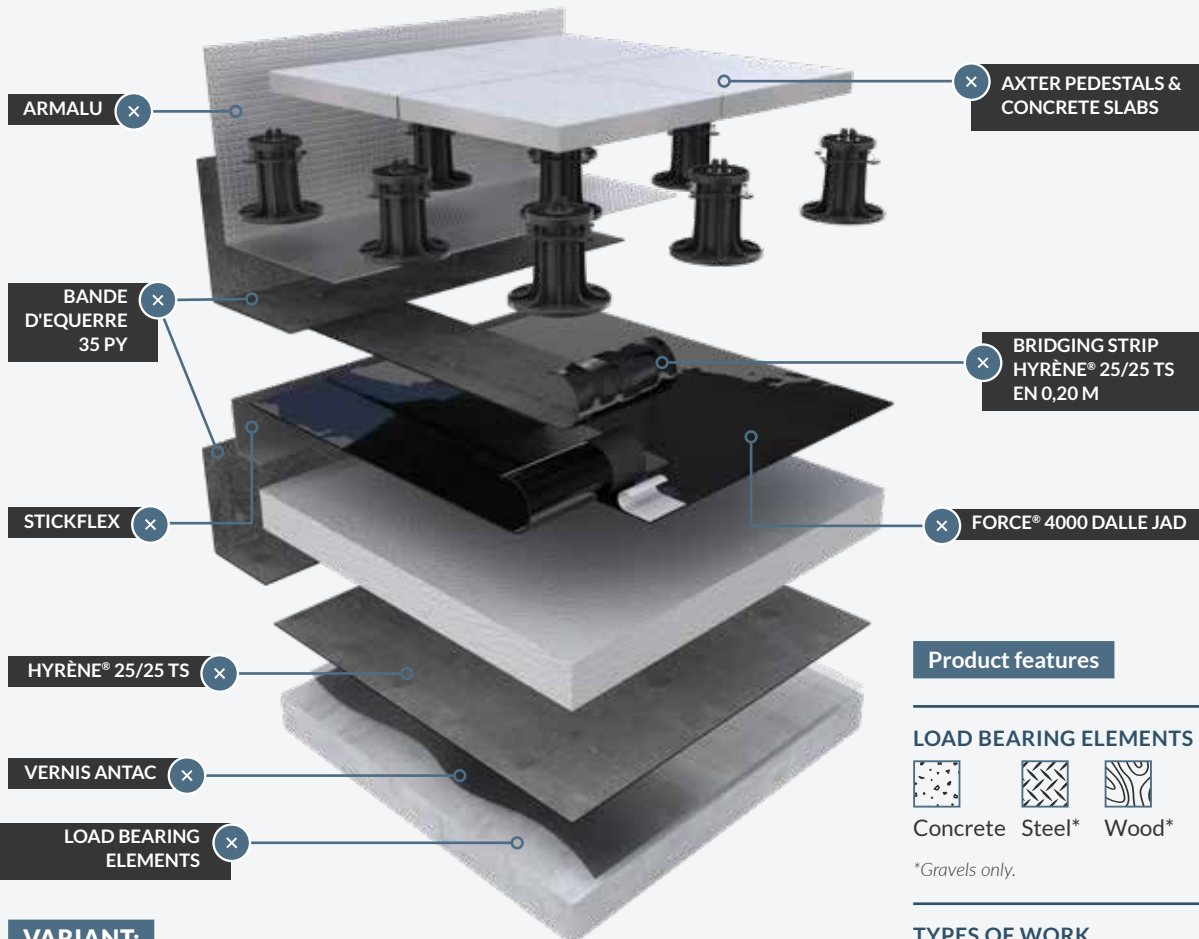
FORCE® 4000 DALLE AND FORCE® 4000 DALLE JAD MEMBRANES



French Technical Approval  
DTA FORCE® DALLE

## VERSION PRESENTED :

FORCE 4000 JAD under paving slabs on pedestals



## Product features

### LOAD BEARING ELEMENTS



Concrete Steel\* Wood\*

\*Gravels only.

### TYPES OF WORK



New



Refurbishment

### FINISH

Inaccessible flat roofs with loose-laid protection or pedestrian-accessible roofs with paving slabs on pedestals

### APPLICATION

#### FORCE® 4000 DALLE :

Single-layer system using the traditional blowtorch method with a separation layer such as MAT 100

#### FORCE® 4000 DALLE JAD :

Single-layer system with self-adhesive longitudinal joints

## VARIANT:

FORCE® 4000 DALLE GL & FORCE® 4000 DALLE JAD GL  
WIDE SINGLE-LAYER MEMBRANES (2 m)

Designed in a 2-metre width to simplify installation on large flat surfaces. This format reduces the number of overlap joints to weld, making application faster and more efficient on site

## KEY ADVANTAGES OF FORCE® 4000 DALLE JAD

- No welding of longitudinal overlaps required: only the bridging strip and end joints need to be welded.
- This system is compatible with cellular insulation types such as EPS, PIR, and PUR, as the self-adhesive joint property allows installation without a torch-applied flame.
- FORCE® 4000 DALLE JAD features a film-coated underside, enabling installation without a separation layer.

# FORCE® ADH



## Specifications Axter FORCE® ADH

### Product features

#### LOAD BEARING ELEMENTS



Concrete



Steel



Wood

#### TYPES OF WORK



New



Refurbishment

#### FINISH

Self-protected inaccessible flat roofs, technical roofs, or roofs with technical zones (with a slope  $\geq 1\%$ )

#### APPLICATION

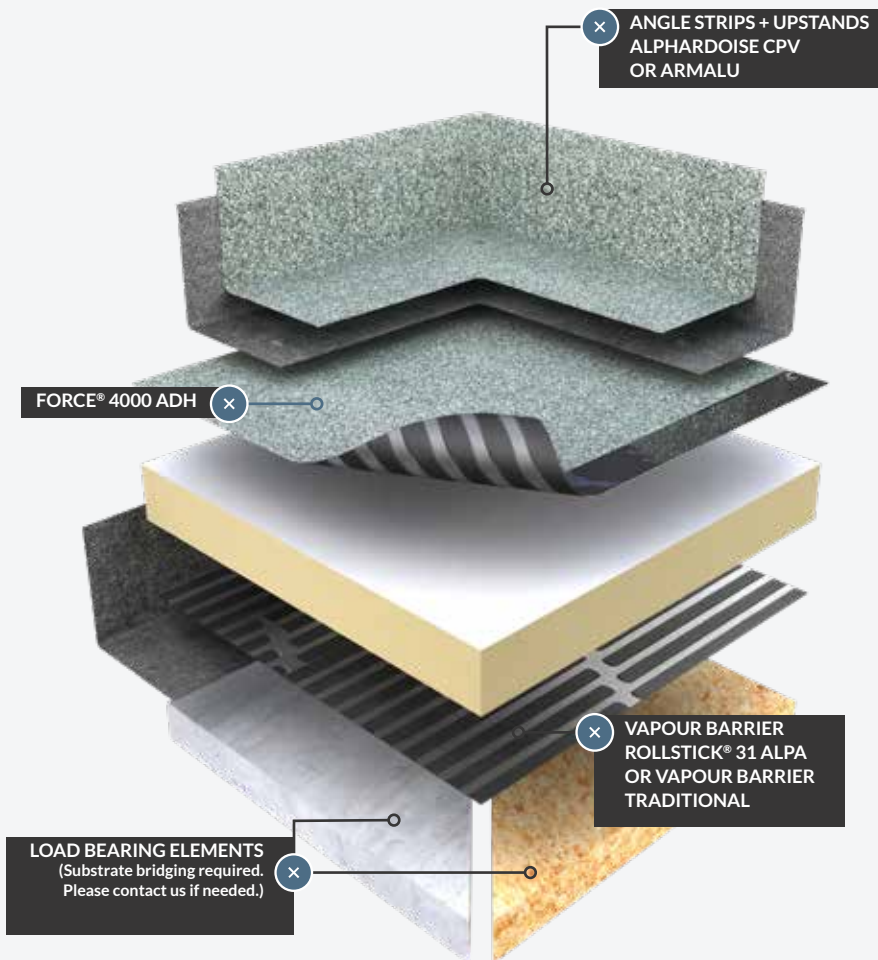
Self-adhesive

#### COLOURS

Grey, black

## KEY ADVANTAGES

- Suitable for all wind zones : 6333 Pa (up to zone 4, exposed site at 20 m height).
- The membrane can be used as complementary waterproofing beneath roofing in mountain climates.



### SIMPLE AND FAST INSTALLATION

Quick and easy to install: no fixings, no adhesive, and no perforation of the load-bearing element. Compatible with cellular insulation such as EPS, PIR, and PUR.



1

**Install the insulation** (if applicable), unroll FORCE® 4000 ADH and position it. Re-roll the sheet to carefully cut and peel off the silicon release film on the underside.



2

**Apply the membrane** and press it down immediately, working from the centre of the roll outwards.



3

**Weld the longitudinal and transverse overlaps.**



4

**Reheat the surface** to complete the installation.

# ALPAL® RANGE

## ALPA® – AN EXCEPTIONAL BINDER, TAILORED FOR EVERY APPLICATION!

The ALPA® binder is one of the most iconic examples of AXTER's expertise and innovation. Its unmatched characteristics ensure high performance for the ALPAL® waterproofing systems.



### SUPERIOR WELDING QUALITY

Thanks to its creep resistance, the ALPA® binder offers high welding reliability and exceptional primer-free adhesion, even on rough substrates such as concrete, bare mineral wool, or existing waterproofing layers.

The continuous bead formed during installation is a clear indicator of this outstanding weld quality.

The ALPA® binder also allows for hot-air welding, eliminating the need for flames and gas on site.

### AN INTERNATIONALLY RECOGNISED SYSTEM

The ALPA® binder is patented and forms the core of systems that have been approved for over 20 years by leading bodies such as the CSTB and various inspection offices.

**Over 40 million m<sup>2</sup> have already been installed across all continents.**

### GUARANTEED LONG-TERM PERFORMANCE

Waterproofing assemblies incorporating the ALPA® binder on flat roofs can be guaranteed for up to 20 years\*.

AXTER offers **20-YEAR WARRANTY\*** for **flat roof waterproofing works** carried out in accordance with industry best practices and Axter's approved documentation (Technical Approvals and Specifications), thus guaranteeing ALPA® membranes against any hidden defects.

**IN CASE OF A DEFECT? AXTER will supply replacement products and cover the cost of reinstallation.**

At the end of the project, a completion report and a copy of the maintenance contract signed by the building owner must be sent to Axter by the waterproofing contractor.

Full warranty terms are available upon request from Axter's Sales Department.

NO HIDDEN DEFECTS,  
**100% PEACE OF MIND!**

\*All material and immaterial damages, as well as removal costs of existing materials, are excluded from the warranty. Each project will be subject to a specific assessment carried out by Axter.

# ROLLSTICK® 31 ALPA

FOR SELF-PROTECTED AND GREEN FLAT ROOFS



The latest addition to the ROLLSTICK® range, ROLLSTICK® 31 ALPA is composed of ALPA® binder, a glass fleece reinforcement, a thermofusible film on the underside, and semi-continuous strips of self-adhesive bitumen protected by a thermofusible film on the top surface.

**It's a 3-in-1 product: substrate primer + vapour barrier + adhesive for cellular insulation.**



## Product features

### LOAD BEARING ELEMENTS

 Wood-based panels  Concrete

### TYPES OF WORK



New

### FINISH

Self-protected and green flat roofs

### APPLICATION

- **No Primer required:** direct welding onto the load-bearing element without a separation layer Primer\*
- **No adhesive required:** insulation is bonded without glue, simply by reheating the surface of ROLLSTICK® 31 ALPA (valid for zones up to 3000 Pa: zone 3, standard site at 10 m / zone 2, standard site at 20 m)

*\*On wood-based panels: substrate bridging is required.*

## KEY ADVANTAGES

■ 2 fewer steps for greater efficiency!

- > No need for substrate priming on concrete or adhesive for the insulation.

## THE AXTER ADVANTAGE

### SPECIAL HIGH-HUMIDITY VERSION: ROLLSTICK® 31 ALPA ALU OR ROLL 25 ALPA ALU

Thanks to their reinforced aluminium core, ROLLSTICK® 31 ALPA ALU and ROLL 25 ALPA ALU are specifically designed for high-humidity environments, under self-protected, green, or protected flat roofs.

# ALPAL® SECUR / ALPAL® 3000

## SELF-PROTECTED SINGLE-LAYER WATERPROOFING SYSTEM ALPAL® 3000 S MEMBRANE

This bituminous waterproofing solution developed by Axter is 100% safe, using hot-air welding for a risk-free installation – both for workers and the surrounding infrastructure.



Subject to technical approval



### Product features

\*Sur béton, pente  $\geq$  1%

### LOAD BEARING ELEMENTS



Concrete\*



Steel



Wood

\*On concrete, slope  $\geq$  1%

### TYPES OF WORK



New



Refurbishment

### FINISH

Self-protected, inaccessible flat roofs.

### APPLICATION

Mechanically fastened (using Axter plates and screws adapted to the substrate), with hot-air welded overlaps.

## KEY ADVANTAGES

- **Hot-air welding** (with a robot or manually): No torch, no flame required on site.
- **Maximum safety** for people, equipment, and the waterproofing system – ideal for sensitive buildings such as timber constructions, warehouses, or workshops storing flammable materials.
- **Versatile system**: compatible with all types of load-bearing elements (concrete, steel, or wood).
- **HQE-compliant approach**, using a water-based primer for a more environmentally friendly solution.

# ALPAL®

## SELF-PROTECTED SINGLE-LAYER WATERPROOFING SYSTEM ALPAL® DECOR CPV MEMBRANE

A single-layer waterproofing solution particularly recommended for refurbishment over old slate-finished membranes..

### Product features

#### LOAD BEARING ELEMENTS



Concrete\*



Steel



Wood

\*On concrete, slope  $\geq 1\%$

#### FINISH

Self-protected, inaccessible flat roofs.

#### TYPES OF WORK



New



Refurbishment

#### APPLICATION

Welded in semi-independent application during renovation works.



French Technical Approval  
DTA CSTB



### KEY ADVANTAGES

- **Direct welding** onto the existing membrane, with **no need for a separation layer or semi-independent screen**.
- **Cost-effective solution** (single layer, no additional products required).
- **High welding reliability** and strong adhesion performance.

# ALPAL® 3000

## SELF-PROTECTED SINGLE-LAYER WATERPROOFING SYSTEM ALPAL® 3000 S MEMBRANE

Single-layer waterproofing solution weldable onto existing membranes or bare mineral wool.

### KEY ADVANTAGES

- **Direct welding onto mineral wool** in a single layer
- **High welding reliability** and strong adhesion performance

### Product features

#### LOAD BEARING ELEMENT



Concrete\*



Steel



Wood

\*On concrete, slope  $\geq 1\%$

#### TYPES OF WORKS



New



Refurbishment

#### FINISH

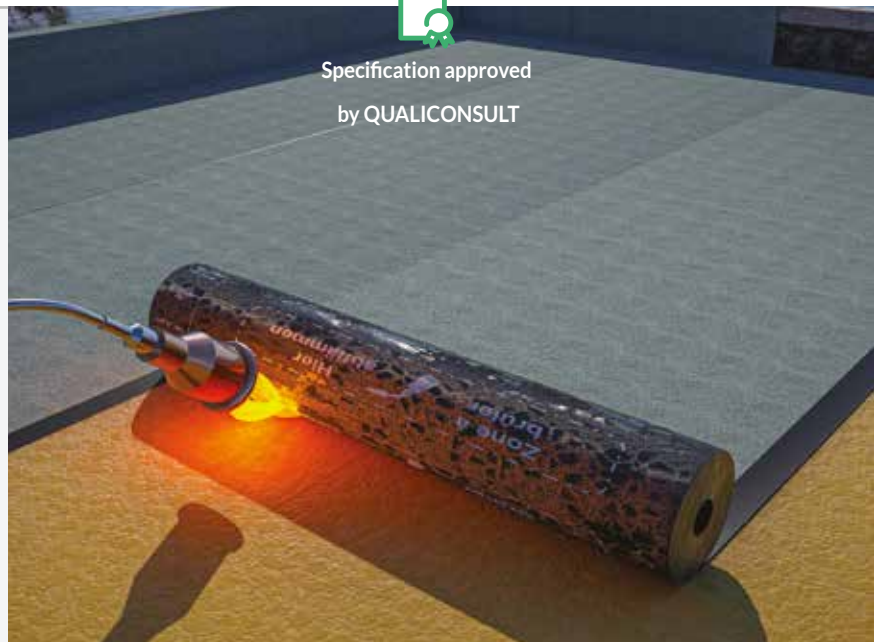
Self-protected, inaccessible flat roofs.

#### APPLICATION

Fully welded in new construction or semi-independent in refurbishment works



Specification approved  
by QUALICONULT



# ALUMINIUM & ECO RANGES

## PAXALU 40 SBS / PAXALU 30 SBS / PAXA 40 SBS

### SELF-PROTECTING MEMBRANE WITH SBS BINDER AND GLASS MAT REINFORCEMENT



#### FEATURES

- **UNDERFACE FINISH:** film
- **SURFACE FINISH:** embossed aluminium

#### APPLICATION

PAXALU 40 and 30 SBS, and PAXA 40 SBS can be fully welded with a gaz torch or bonded with hot bitumen. Longitudinal overlaps are 7 cm, transverse overlaps 15 cm.

PAXA and PAXALU membranes are classics within our range - they have been in use for over 30 years and loved by professional waterprooferers, thanks to their weldability and longevity.

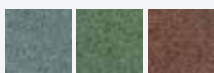
#### LOGISTICS & SPECIFICATIONS

		Dimensions	Surface weight	Packaging	Storage
<b>PAXA 40 SBS</b>	★	W: 1 m L: 10 m	2,42 kg/m <sup>2</sup>	39 rolls / pallet	Upright, without stacking
<b>PAXALU 30 SBS</b>	★★	W: 1 m L: 10 m	2,75 kg/m <sup>2</sup>	30 rolls / pallet	
<b>PAXALU 40 SBS</b>	★★★	W: 1 m L: 10 m	3,5 kg/m <sup>2</sup>	28 rolls / pallet	

## ECO RANGE

### TWO-LAYER SYSTEM

#### HYRÈNE 3000 PY AR (SBS BINDER)



grey, green, red



#### Self-protected membrane with SBS binder and polyester reinforcement

HYRÈNE-HYRANGER 3000 PY AR is a membrane with an elastomeric bitumen binder, stabilised polyester reinforcement, and mineral self-protection. The minimum width of the bare strip is 70 mm.

Second layer of a waterproofing system for inaccessible flat roofs without additional protection (on concrete, wood, or steel substrates).

#### APPLICATION

Applied with a gaz torch. Store rolls upright, without stacking. Applied with a gaz torch. Store rolls upright, without stacking.

# SPECIFIC APPLICATIONS

## HYRÈNE 3000 FP ALU REFLECT



Under specifications



### LOAD-BEARING ELEMENTS (SLOPE $\geq$ 3%)



Concrete



Steel



Wood

### TYPES OF WORK



New



Refurbishment



Change of use

### FINISH

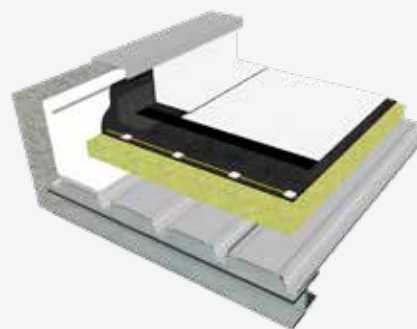
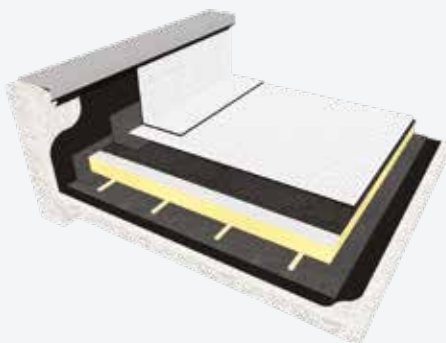
Self-protected

### APPLICATION

Welded onto the first layer adapted to the substrate

## WHY CHOOSING HYRÈNE 3000 FP ALU REFLECT ?

- A Solar Reflectance Index (SRI) of 95: this highly reflective membrane behaves almost like a mirror, helping to reduce heat absorption by buildings
- Subject under Technical Approval
- Excellent ageing resistance thanks to its aluminium surface finish
- Easy roof maintenance due to the smooth aluminium surface
- Great versatility, as the aluminium-finished membrane is compatible with all base layers selected according to the type of load-bearing element
- Compatible with all types of insulation: PUR, PIR, EPS, rock wool, cellular glass



# SLATE-FINISHED MEMBRANE

**WHITE FLAKES FOR A LIGHT-REFLECTING EFFECT**



ALPALU specifications approved by  
QUALICONSLT



Two-layer solution: 2<sup>nd</sup> coat self-protected over all AXTER 1<sup>st</sup> coats.

## LOAD-BEARING ELEMENTS



Concrete



Steel



Wood

## TYPES OF WORK



New



Refurbishment



Change of use

## FINISH

Self-protected

## APPLICATION

Welded onto the first layer adapted to the substrate

## WHICH SOLUTION ?

		HYRÈNE 3000 FP ALU REFLECT	SLATE-FINISHED MEMBRANE
SINGLE-LAYER			X
TWO-LAYER		X	X
TYPES OF WORK		NEW & REFURBISHMENT	NEW & REFURBISHMENT
LOAD-BEARING ELÉMENTS	STEEL	IF SLOPE ≥ 3%	X
	CONCRETE	IF SLOPE ≥ 3%	X
	WOOD	IF SLOPE ≥ 3%	X
EASY CLEANING		X	
AGEING RESISTANCE		+++	+
SRI (SOLAR REFLECTANCE INDEX)		<b>95</b>	<b>45</b>

# SPECIFIC APPLICATIONS

## FORCE 4000 PONT

**THE IDEAL SOLUTION FOR WATERPROOFING**

**ALL TYPES OF BRIDGE DECKS**



### DESCRIPTION

FORCE 4000 PONT is a membrane with an SBS binder and stabilised polyester reinforcement.

Application is carried out by full-surface heat welding onto a substrate primed with VERNIS ANTAC GC.

### CHARACTERISTICS

- **Durable and reliable** single-layer system.
- **Excellent weld** strength.
- **Hot bitumen applied** directly onto FORCE 4000 PONT.

# FORCE 4000 PONT



## APPLICATION

### 1/ BRIDGE DECK

The bridge deck must be clean, free of dust, oil, grease, etc.

### 2/ VERNIS ANTAC GC

Application of a bituminous primer coat (VERNIS ANTAC GC) on the main areas and upstands:

- Concrete substrate: 150 g/m<sup>2</sup>
- Metal substrate: 100 g/m<sup>2</sup>

### 3/ FORCE 4000 PONT (MAIN AREAS AND UPSTANDS)

Unroll the membrane to position it. Fully weld the membrane with a gaz torch to ensure complete adhesion.

### 4/ BITUMINOUS CONCRETE

Apply hot bituminous concrete directly onto FORCE 4000 PONT. Compact the bituminous concrete using suitable equipment.

# LIQUID APPLICATIONS

## STARCOAT PRO X

### A SINGLE COLD-APPLIED RESIN

STARCOAT PRO X is a liquid polyurethane resin waterproofing system suitable for all types of work, new or renovation, on load-bearing concrete elements. It is ready to use and easy to apply. When dry, it forms an elastic, water-proof membrane that is resistant and adherent to the substrate.

### TECHNICAL AND AESTHETIC PERFORMANCE



#### FLAMELESS

Flameless installation, ideal for work near sensitive components (PVC joinery, skylights)



#### RESISTANCE

UV-resistant



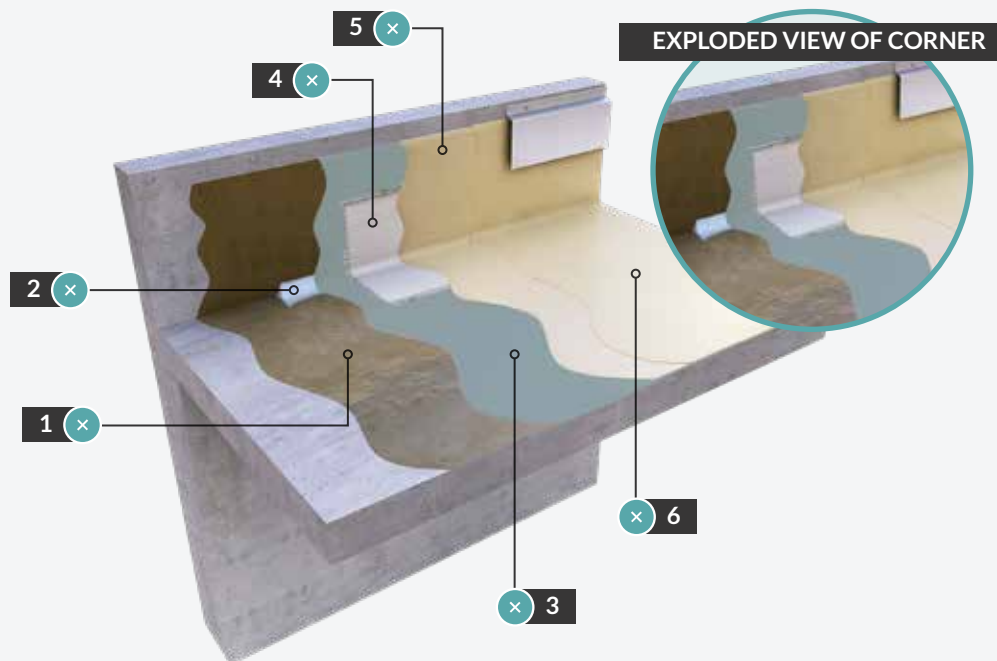
#### FINISH

5 different finishes for an aesthetically pleasing result



#### CLIMATE

Temperature resistant (-20°C to +90°C)



### FEATURES

- Single-component polyurethane formula, **no catalyst required, ready for application.**
- **Fast drying time** (6 to 12 hours per coat)
- **Estimated lifespan 25 years in a reinforced system** (W3 classification).
- SE4 and SE5

# STARCOAT PRO X

## APPLICATION

### 1/ PRIMCOAT PRO X R4

Apply the primer to all of the surfaces to be treated and leave to dry for between 2 and 6 hours. Primer to be applied to porous substrates with a maximum moisture content of 4%.

### 2/ STARCOAT PRO X MASTIC

Apply a bead of STARCOAT PRO X MASTIC to the corner.

### 3/ MATCOAT R

Apply a 400 g/m<sup>2</sup> coat of STARCOAT PRO X and press in whilst wet the MATCOAT R reinforcement layer

### 3/ STARCOAT PRO X

Apply 2 coats of STARCOAT PRO X using a brush, roller or airless sprayer. Degassing between coats. Start by treating the upstands and cross-lapping the layers. Leave to dry for between 2 and 6 hours. Choose two colours to check overlaps.

### 4/ STARCOAT PRO X COLOURED FINISH

Clear, coloured or coloured flake finishing resin.

## 7 KEY POINTS FOR A SUCCESSFUL PROJECT

- 1 Lay on concrete that is more than 28 days old
- 2 Check that there are no slope or flatness defects (these cannot be corrected with resin).
- 3 Make sure the substrate is perfectly clean and free of dust.
- 4 Measure hygrometry.
- 5 Carry out checks on the substrate's cohesion, dryness and porosity.
- 6 Apply to a substrate where the temperature is at least 3°C above the dew point.
- 7 Apply in dry weather when the ambient temperature is between 5°C and 35°C.

## COMPLEMENTARY PRODUCTS



**PRIMCOAT PRO X EPOXY** two-component for damp substrates



**PRIMCOAT PRO X PU** on sanded tiles

**PRIMCOAT R** for repairing bituminous membranes



**MATCOAT R** for waterproofing upstands and single points

**MATCOAT 100** for reinforcing the current section of a refurbishment



**MATCOAT JD** for expansion joints



**STARCOAT PRO X ACCELERATOR** for quick drying, to be diluted in STARCOAT PRO X

**STARCOAT PRO X THIXO ADDITIVE** to mix with STARCOAT PRO X to make it less liquid

**STARCOAT PRO X THIXO** for single points or EP and very sloping roofs, recommended for upstands



**STARCHIPs** aesthetic finishing chips are also available

**DILUCOAT** solvent for cleaning tools

## SOLUTIONS TABLE

	PRIMER CHOICE			
	PRIMCOAT® PRO X EPOXY	PRIMCOAT® PRO X R4	PRIMCOAT® R	PRIMCOAT® PRO X PU
DRY CONCRETE (MOISTURE CONTENT ≤4.5%)	250 g/m <sup>2</sup>	100 g/m <sup>2</sup>	150 g/m <sup>2</sup>	
DAMP, NON-WEeping CONCRETE (MOISTURE CONTENT ≤6%)	300 g/m <sup>2</sup>	100 g/m <sup>2</sup>	150 g/m <sup>2</sup>	
SCREED OR CEMENT RENDERING (REPAIR ONLY)	250 g/m <sup>2</sup>	100 g/m <sup>2</sup>	150 g/m <sup>2</sup>	
BITUMINOUS MEMBRANE			250 g/m <sup>2</sup>	
SANDED TILES				50 g/m <sup>2</sup>
METAL ACCESSORIES (UPSTANDS)		100 g/m <sup>2</sup>		
VERY CLOSED CONCRETE (LOW POROSITY)	250 g/m <sup>2</sup>	100 g/m <sup>2</sup>	150 g/m <sup>2</sup>	

		SOLUTIONS			
	TYPE OF ROOF	PRIMER	STARCOAT® PRO X		FINISH = 200 g/m <sup>2</sup>
			1.2 mm = 2x750 g/m <sup>2</sup>	1.5 mm = 2x750 g/m <sup>2</sup> + 300 g/m <sup>2</sup>	
VISIBLE	ACCESSIBLE, BALCONY, LOGGIA, PASSAGEWAY, GRANDSTAND, TIER, PEDESTRIANS	✓	✓		✓
	INACCESSIBLE, TECHNICAL OR WITH TECHNICAL AREA	✓	✓		✓
UNDER PROTECTION	INACCESSIBLE	✓	✓		✓
	TECHNICAL OR TECHNICAL AREA	✓	✓		✓
	PEDESTRIAN ACCESS: BALCONIES, LOGGIAS, PASSAGEWAYS, GRANDSTANDS, BLEACHERS	✓	✓		✓
	ACCESSIBLE WITH BONDED TILES: BALCONIES, LOGGIAS, PASSAGEWAYS, GRANDSTANDS, ROOFS, PEDESTRIANS	✓		✓	✓

	DRYING AND RECOATING TIME AT 20°C:					
	PRIMCOAT® PRO X EPOXY	PRIMCOAT® PRO X R4	PRIMCOAT® R	PRIMCOAT® PRO X PU	STARCOAT® PRO X	STARCOAT® PRO X FINISH
DRY TO THE TOUCH	3 hours	1 - 2 hours	2 - 4 hours	1 hour		5 hours
DRY TO TRAFFIC	3 - 6 hours	3 - 4 hours	4 - 6 hours	1 hour	6 - 12 hours	12 hours
RECOATING TIME MIN > MAX	6 > 24 hours	3 > 6 hours	6 > 48 hours	1 > 3 hours	24 hours before FINISH 48 hours between coats	

	UPSTANDS			
	PRIMER	STARCOAT® PRO X MASTIC	400 g of STARCOAT® PRO X + MATCOAT® R	STARCOAT® PRO X (2x750 g/m²)
TYPES OF UPSTANDS				
STANDARD CASE	✓	✓	✓	✓

## TABLE

STARCOAT® PRO X FINISH		PROTECTION					
PIGMENT PASTE = 10% OF FINISH	SILICA	WITHOUT SUPPLEMENTARY PROTECTION	GRAVEL	UNCOUPLED SLABS	DSP	SCREED + TILING	BONDED TILES
✓	✓	✓					
✓		✓					
✓			✓				
				✓			
					✓	✓	
	✓						✓



### FIND OUT MORE

SEL should not be applied in the rain.  
The minimum substrate temperature must be 3°C above the dew point temperature.

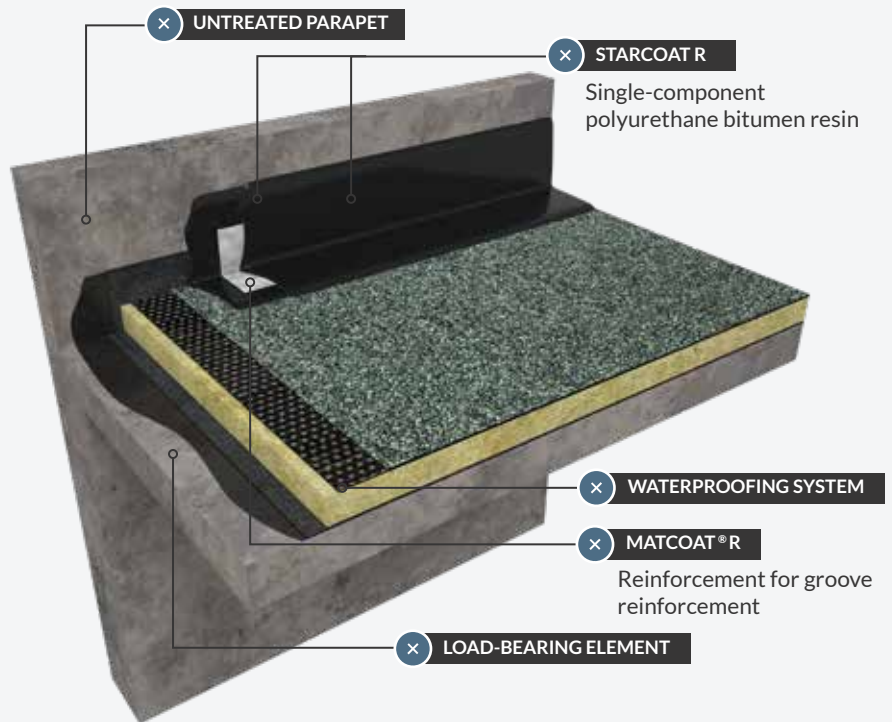
The ambient and substrate temperatures must be greater than or equal to 5°C and less than 40°C.  
Maximum air humidity must be less than 85%.

# LIQUID APPLICATIONS

## STARCOAT R

### READY-TO-USE SEALING RESIN

Reliable and ready to use, STARCOAT R is a unique, single component polyurethane bitumen resin, with integrated anti-root protection. Starcoat R is the ideal waterproofing solution for complex detailing, localised repairs to new and old bitumen membranes and areas where use of a naked flame is prohibited..



### LOGISTICS AND FEATURES

	Weight	Packaging	Storage
STARCOAT R	20 kg	30 cans / pallet	1 year in original unopened packaging
	4 kg	24 boxes of 4 cans / pallet	
MATCOAT R	W: 0.15 m L: 50 m	144 rolls / pallet	



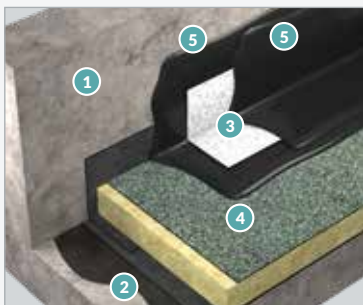
# STARCOAT R

## APPLICATION

### ON UPSTANDS

With excellent primerless adhesion to most materials, STARCOAT R is ideal for all types of upstands.

#### CLASSIC UPSTAND



- 1 Untreated parapet
- 2 Load-bearing element
- 3 MATCOAT R
- 4 Waterproofing system
- 5 STARCOAT R

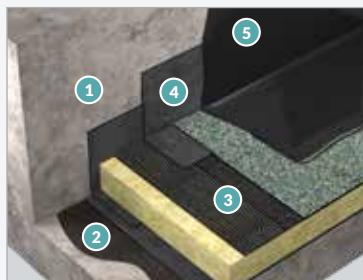
#### APPLICATION: 2 x 700 g/m<sup>2</sup>

STARCOAT R is applied in two coats of 700 g/m<sup>2</sup> each to the finished waterproofing detail (heel and height 15 cm).

The first coat enables MATCOAT R (or MATCOAT JD) to be applied.

The second coat covers the reinforcement and forms a flexible film.

#### MIXED UPSTAND



- 1 Untreated parapet
- 2 Load-bearing element
- 3 Waterproofing system
- 4 ÉQUERRE DE RENFORT 35 PY
- 5 STARCOAT R

#### APPLICATION: 1 x 800 g/m<sup>2</sup>

The 35 PY angle strip is welded to the 1st layer of the waterproofing system.

A layer of STARCOAT R is applied to the 2nd layer of waterproofing at a rate of 800 g/m<sup>2</sup>, 5 cm higher than the 35 PY CORNER BAND, at the heel and at the top.

## APPLICATION

### IN GUTTERS

Simple, practical application for gutters and spot repairs to waterproofing.

#### METAL GUTTERS

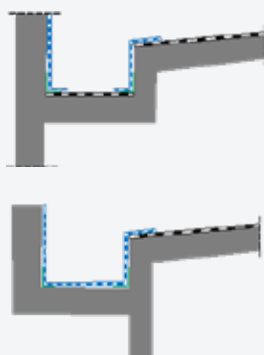


#### APPLICATION: 2 X 700 g/m<sup>2</sup> + MATCOAT INSTALLATION 1 x 300 g/m<sup>2</sup>

A strip of MATCOAT R is adhered to a layer of STARCOAT R of approximately 300 g/m<sup>2</sup> only at gutter junctions and rainwater inlet systems (EEP).

After drying, STARCOAT R is applied in 2 coats of 700 g/m<sup>2</sup> each.

#### CONCRETE GUTTERS



#### INTERNAL GUTTERS DOMINATING THE ENCLOSED PARTS OF THE BUILDING CONSUMPTION: 2 x 700 g/m<sup>2</sup>

the gutter should be lined with a compatible membrane, installed in accordance with local regulations. STAR COAT R should then be applied thereabove and continued across the face of the upstand.

#### GUTTERS DOMINATING THE NON-ENCLOSED PARTS OF THE BUILDING CONSUMPTION: 2 x 700 g/m<sup>2</sup>

A strip of MATCOAT R is taped onto a layer of STARCOAT R weighing approximately 300 g/m<sup>2</sup> in the corner of the upstand.

STARCOAT R can be applied to the entire surface at a rate of 2 x 700 g/m<sup>2</sup>.

# ACCESSORIES

## DEPCO

### A COMPLETE RANGE OF RAINWATER OUTLETS FOR BITUMINOUS WATERPROOFING

DEPCO is a rainwater outlet system (EEP) that, installed correctly, provide drainage from waterproofed roofs. It comes in a wide range of diameters. Created in 2006, DEPCO is a genuine innovation that has become a benchmark in the waterproofing sector.

#### INNOVATIVE THANKS TO ITS UNIQUE DESIGN



##### READY-TO-USE PRODUCT

No primer required to plate



##### RELIABLE WATERPROOFING

Pre-welded bituminous flange guarantees waterproof integrity and weldability of the waterproofing system.



##### OPTIMUM ADAPTABILITY

DEPCO adapts to all substrates and roof shapes, even complex ones



##### LIGHTWEIGHT AND DURABLE

Shock-resistant, the DEPCO is easy to handle and stock



##### ECO-FRIENDLY

DEPCO does not require priming

EXPANDED CRIMP



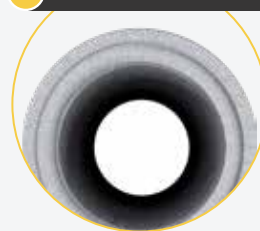
PLATE



- Plate made with HYRÈNE-HYRANGER TS PY
- 180 g/m<sup>2</sup> reinforcement with thermofusible film on the underside and macro-perforated surface

H = 600 mm

SHEARED EYELET



Suitable for horizontal installation

RIGID ALUMINIUM TUBE

- Thickness 12/10<sup>th</sup> to 15/10<sup>th</sup>
- Height adapted to thick insulation

# DEPCO

## APPLICATION

### FAST, SIMPLE AND RELIABLE INSTALLATION

TO HELP YOU SAVE TIME



1

#### INSERT

Once the 1<sup>st</sup> layer of waterproofing has been laid, insert the DEPCO into the recess.



3

#### COVER

The 2<sup>nd</sup> layer of waterproofing is welded on and completely covers the DEPCO.



2

#### WELD

Weld the DEPCO elastomer plate to the first layer of waterproofing.



4

#### CUT

Leave to cool for a few moments and cut the hole in the DEPCO.

#### PACKAGING ACCORDING TO DIAMETER

ITEM CODE	COMMERCIAL NAME	DIAMETERS INT / EXT (mm)	PACKAGING	GENCOD CODE
189B050	DEPCO HYRÈNE EEP DIAM 50	46.4 / 49	Box of 15	3563460058709
189B063	DEPCO HYRÈNE EEP DIAM 63	59.4 / 62	Box of 15	3563460058716
189B075	DEPCO HYRÈNE EEP DIAM 75	71.64 / 74	Box of 15	3563460058723
189B085	DEPCO HYRÈNE EEP DIAM 85	81.2 / 84	Box of 15	3563460058730
189B090	DEPCO HYRÈNE EEP DIAM 90	86.64 / 89	Box of 15	3563460058747
189B095	DEPCO HYRÈNE EEP DIAM 95	91.64 / 94	Box of 15	3563460058754
189B100	DEPCO HYRÈNE EEP DIAM 100	98.14 / 100.5	Box of 10	3563460058761
189B110	DEPCO HYRÈNE EEP DIAM 110	106 / 109	Box of 10	3563460058778
189B115	DEPCO HYRÈNE EEP DIAM 115	111.2 / 114	Box of 10	3563460058785
189B120	DEPCO HYRÈNE EEP DIAM 120	115.9 / 119	Box of 10	3563460058792
189B125	DEPCO HYRÈNE EEP DIAM 125	120.8 / 124	Box of 10	3563460058801
189B145	DEPCO HYRÈNE EEP DIAM 145	140.6 / 144	Box of 10	3563460058815
189B155	DEPCO HYRÈNE EEP DIAM 155	150.6 / 154	Box of 10	3563460058822
189B195	DEPCO HYRÈNE EEP DIAM 195	189.6 / 194	Box of 6	3563460058839

# STICKFLEX

## FLEXIBLE SELF-ADHESIVE SEALING TAPE WITH SBS ELASTOMER BINDER



### APPLICATION

STICKFLEX will cold bond to a variety of substrates: wood, concrete, terracotta, tiles, steel, bituminous sheeting, etc.

The substrate must be clean, dry and free from dust and loose particles. Apply in dry weather, at an ambient temperature of minimum 5°C.

### FEATURES

- **UNDERFACE FINISH:** self-adhesive bitumen protected by a peel-off film.
- **SURFACE FINISH:** aluminised film. High adhesive power **when cold.**
- It is flexible and can be laid on any surface (sound, clean and dry) **without the need for an adhesion primer.**

### PACKAGED IN ROLLS

Dimensions	Number of reels / box
10 m x 7.5 cm	24
10 m x 10 cm	18
10 m x 15 cm	12
10 m x 20 cm	6
10 m x 30 cm	6
10 m x 50 cm	1
10 m x 1 m	1



Axter Coletanche Inc.

Axter Limited

Axter Czech Republic s.r.o.

Head office

Axter Ibérica

Axter Chile

Axter Australia



 **AXTER** COLETANCHE

IKO-AXTER designs, manufactures and markets bituminous waterproofing membranes for flat and sloping roofs, as well as public works and civil engineering structures. These waterproofing systems also include all the additional products and accessories needed for their installation.

Over 40% of IKO-AXTER's sales are exported to more than 70 countries. Our sales and technical teams are committed to working alongside you and, as true partners, are with you every step of the way.

*Avec vous, par dessus tout*

 **HEAD OFFICE**

6 rue Laferrière  
75009 Paris  
[info@axter.eu](mailto:info@axter.eu)

 **CUSTOMER SERVICE FRANCE**

Rue Joseph Coste  
59552 Courchelettes  
Tel. 33 (0)3 59 64 00 37  
[serviceclients@axter.eu](mailto:serviceclients@axter.eu)

 **TECHNICAL SUPPORT**

Rue Joseph Coste  
59552 Courchelettes  
Tel. 33 (0)3 27 93 78 93  
[conseil-technique@axter.eu](mailto:conseil-technique@axter.eu)

[www.axter.eu](http://www.axter.eu)

