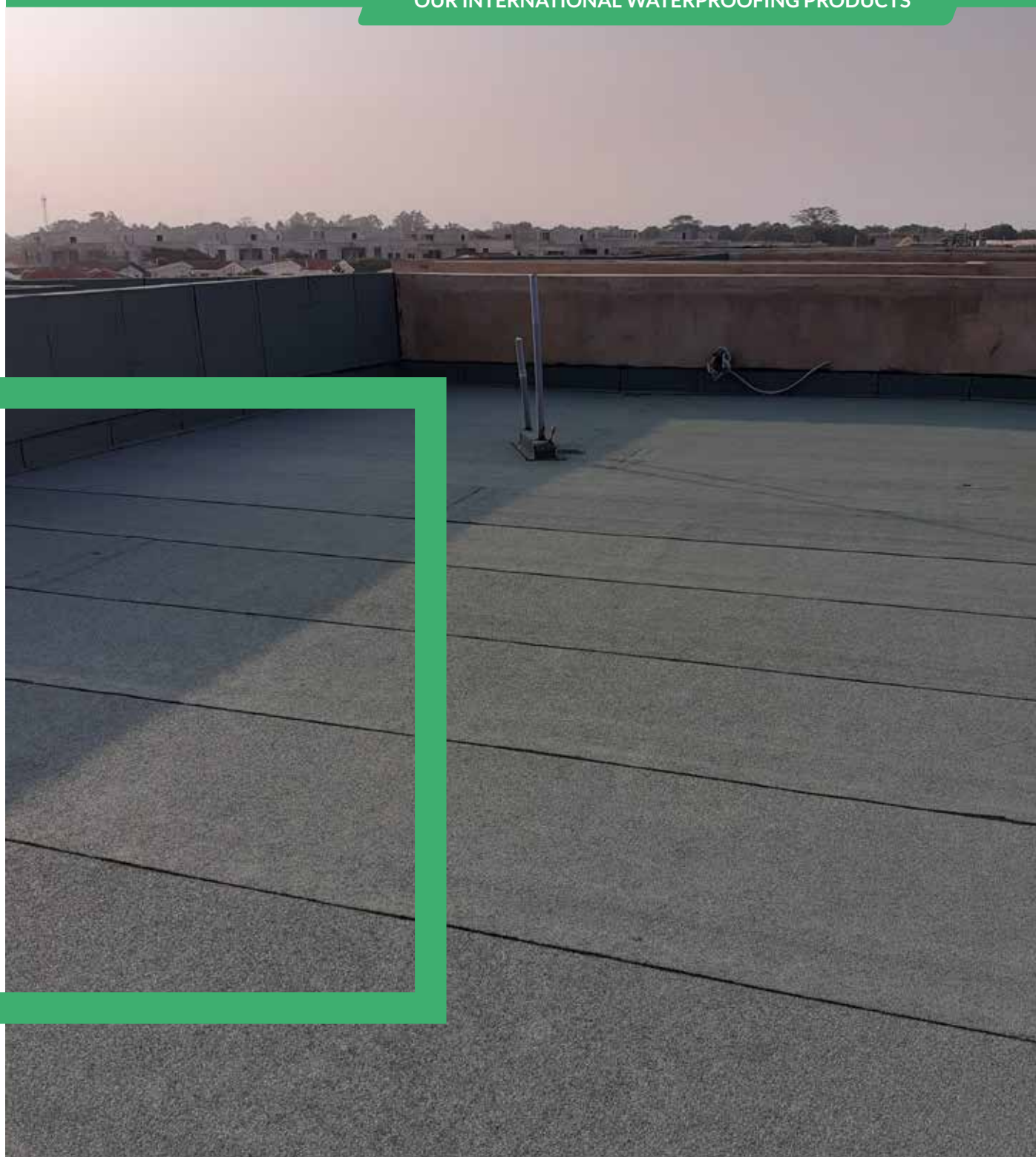


CONCEPTO RANGE  
**ALIZÉ**

OUR INTERNATIONAL WATERPROOFING PRODUCTS



 **AXTER**  **COLETANCHE**

**WATERPROOFING SOLUTIONS**

BITUMINOUS

LIQUID

ECO-FRIENDLY

# IKO-AXTER, A KEY PLAYER IN THE INTERNATIONAL WATERPROOFING MARKET

A major player with a long standing, reputable history providing outstanding bituminous waterproofing membrane, **IKO-AXTER** designs and manufactures bituminous waterproofing membranes for flat and sloped roof terraces, as well as public works and civil engineering structures, in northern France.

IKO-AXTER is a benchmark for all building professionals, thanks not only to its products, recognized for their reliability, performance and innovation, but also to the technical expertise of its teams and its best in class service, at the heart of its development.

Today, IKO-AXTER is reaffirming its position with a wide range of references in over 70 countries and sales of over €160 million, 40% of which are international.



## IKO-AXTER STATISTICS

**7**  
locations  
worldwide

**230**  
employees



# ALIZÉ CONCEPTO RANGE

A GLOBAL RANGE TO RESPOND EFFECTIVELY TO EVERY PROBLEM:

P. 6	 <b>PRIMER</b>
P. 8	 <b>INSULATION AND ADHESIVES</b>
P. 10	 <b>SYSTEMS UNDER TECHNICAL APPROVAL</b> Inaccessible terrace / Accessible terrace and balconies/ Green roofs / Basement walls
P. 16	 <b>ALUMINIUM &amp; ECO RANGES</b> PAXALU / SBS ECO
P. 18	 <b>SPECIAL APPLICATIONS</b> Reflective flat roof / EXCELPONT GC
P. 22	 <b>LIQUID APPLICATIONS</b> STARCOAT PRO X / STARCOAT R
P. 28	 <b>ACCESSORIES</b> DEPCO / STICKFLEX / STICKBAND

**160**

million euros in sales

**40%**

of sales outside France

More than  
**24**

million m<sup>2</sup> of membranes manufactured each year

**5**

French and international quality labels

# PREPARATION BEFORE THE WORKSITE

## BEST PRACTICE FOR YOUR SAFETY,

wear personal protective equipment and equip yourself with the right tools.

- Reinforced shoes
- Safety gloves
- Long sleeves
- Reinforced helmet protection
- Etc.



# WATERPROOFING, THE CORE OF OUR BUSINESS

IKO-AXTER offers a wide range of waterproofing systems to meet all your waterproofing needs.

## WE CAN ACCOMMODATE ANY DESIGN BRIEF

### THE LOAD-BEARING ELEMENT



Concrete



Wood



Steel

### ROOF INSULATION

■ PSE

■ PIR

■ PUR

■ WELDABLE

### DESTINATION

■ ACCESSIBLE

■ INACCESSIBLE AND/OR TECHNICAL

### FINISH

■ SELF-PROTECTED

■ ADDED PROTECTION (SLABS, TILES)

■ GREEN



# PRIMER

## SOLID BITUMEN BLOCK

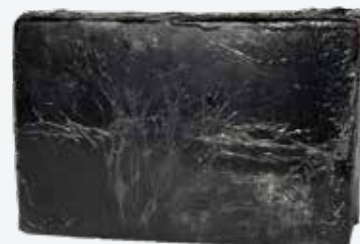
### HOT IMPREGNATION COATING BASED ON BITUMEN SOLUTION

#### FEATURES

- **USAGE:** For bonding bituminous waterproofing membranes, joint filing and crack sealing.

#### APPLICATION

- The bitumen blocks are melted using suitable equipment, such as a regulated bitumen boiler.
- The melting temperature ranges between 150°C and 180°C. Overheating must be avoided, as it may lead to a loss of performance.
- The temperature should be adjusted according to the site requirements.
- The molten bitumen is generally poured using a watering can before laying the waterproofing membrane or the insulation.



#### LOGISTICS

- 17 kg block on pallet

## IKOPRIM BE3

### COLD IMPREGNATION COATING BASED ON BITUMEN PRIMER

#### FEATURES

- **COLOUR:** brown
- **USAGE:**
  - Waterproofing of underground structures and flat roofs.
  - Impregnation of concrete, metal or wood substrates intended to receive bituminous membranes.

#### APPLICATION

IKOPRIM is applied cold using a brush, roller, or trowel, after checking the condition of the surfaces (e.g. loose particles) and treating joints and cracks. Allow to dry completely before applying the waterproofing system (8 to 12 hours depending on weather conditions).

**The composition of the primer layer varies depending on the type of substrate:**

- For porous substrates (e.g. masonry walls), IKOPRIM must be diluted with 50% clean, cold water, i.e. 300 g of pure product/m<sup>2</sup>/layer.

#### LOGISTICS

- Available in 20 kg cans, 30 cans per pallet.



#### FIND OUT MORE

Do not apply IKOPRIM at temperatures below 5°C or to wet decks. Surface should be dry and clean.

IKOPRIM should only be diluted with water (any other solvent is prohibited).

Stir well before use.

# VERNIS ANTAC

## READY-TO-USE SUPERSTABILIZED BITUMEN PRIMER



### FEATURES

- **USE:** For priming concrete, metal or wood substrates intended for bituminous membranes.
- **ADVANTAGES:** Quick-drying, ready-to-use. The 30L full-opening can allows direct use of the roller.

### APPLICATION

VERNIS ANTAC is applied by brush or roller to a dry, clean substrate (150 to 300 g/m<sup>2</sup>). Allow to dry completely before applying the waterproofing (60 to 90 minutes depending on weather conditions).

### LOGISTICS

- 5L or 30L metal cans or 500 mL aerosol can (box of 6).
- 140 quantity/drums/cans (5L), or 24 quantity/cans/drums (30L), or 84 boxes of 12 aerosols.
- In a cool, ventilated place, away from heat and away from any source of flame or spark.
- 2 years (from date of manufacture, in original unopened packaging).

### CLEANING

Tools can be cleaned with petroleum solvents. (e.g.: White Spirit).



### FIND OUT MORE

VERNIS ANTAC does not contain toluene.

For your own safety, you are advised to wear a suitable mask in confined spaces.

It is essential to stick to the recommended use. Overuse could impair the adhesion of the membrane.

**Do not pour residues down the drain.**

# INSULATION AND ADHESIVES

## HYRASTIK

### ONE-COMPONENT, LIQUID, EXPANDING POLYURETHANE ADHESIVE



#### FEATURES

- **COLOUR:** liquid honey like
- **USE:** for adhering insulation boards

#### APPLICATION

Application is by cords (~50 g/mL), spaced 30 cm apart, with a minimum of 2 lines of adhesive per insulating panel. Insulating panels should be laid immediately after glue application, before a skin forms on the surface of the lines. Apply firm pressure to the insulation panels to ensure adhesion

Drying time is 2 to 6 hours, depending on temperature and humidity conditions. The glue's expansion allows it to compensate for any unevenness in the substrate, within the limits of DTU 20.12 specifications.

#### LOGISTICS

- Use: 200 to 250 g/m<sup>2</sup>.
- Maximum storage life: 9 months.
- Store in a cool, dry place, away from heat, in its original, hermetically sealed packaging.



#### FIND OUT MORE

Do not apply if the substrate temperature is below 5°C.

# IKO ENERTHERM ALU XL PRO



Subject to technical approval

## INSULATION BOARD

IKO enertherm ALU XL PRO is an insulation board with a 100% polyisocyanurate rigid foam core, coated on both sides with a gas-tight multilayer aluminium facing. Free from CFC, HCFC and HFC.

## FEATURES

- Thickness from 30 to 200 mm.
- Lightweight panels that are easy to handle, less volume for the same insulating power, quick and easy to install.
- Easy to handle and time saving versus other heavier weight insulation types
- High dimensional stability, resistance to deformation and resistance to compression.



## LOGISTICS

- Store in a dry place, away from bad weather (rain and sunshine).

## THERMAL RESISTANCE (M<sup>2</sup>·K/W) OF IKO ENERTHERM ALU XL PRO INSULATION BOARDS

THICKNESS (MM)		30	40	50	60	70	80	90
THERMAL RESISTANCE		1.35	1.80	2.30	2.75	3.20	3.65	4.10
1 200 x 600	m2 per pack	11.52	8.64	7.20	5.76	5.04	4.32	2.88
	m2 per pallet	115.20	86.40	72.00	57.60	50.40	43.20	40.32

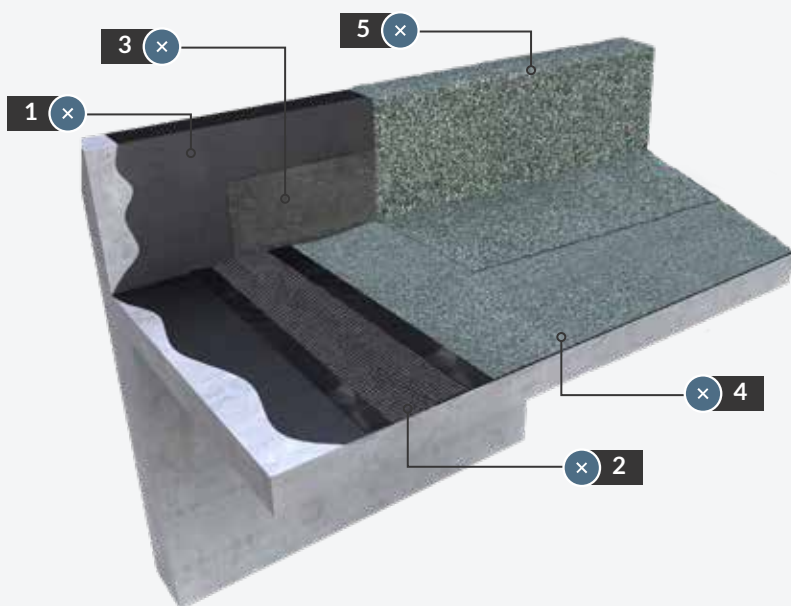
THICKNESS (MM)		100	110	120	130	140	160
THERMAL RESISTANCE		4.60	5.05	5.50	5.95	6.45	7.35
1 200 x 600	m2 per pack	3.60	2.88	2.88	2.16	2.16	1.44
	m2 per pallet	36.00	28.80	28.80	25.92	25.92	23.04

# SYSTEMS UNDER TECHNICAL APPROVAL

## SELF-PROTECTED INACCESSIBLE ROOF



Subject to technical approval



■ Solution up to 20 m<sup>2</sup>. If the surface area is larger than 20 m<sup>2</sup>, use the THERMECRAN semi-independent screen

### APPLICATION

#### 1/ IKOPRIM / VERNIS ANTAC

Cold application by brush, roller or trowel at a rate of 300 g/m<sup>2</sup>.

#### 2/ HYRENE-HYRANGER TS PY / HYRENE-HYRANGER TS PY GRÉSÉ (POLYESTER REINFORCEMENT)

Unroll the HYRENE-HYRANGER TS PY dry roll, position it and weld it in place.

Overlapping:

- 6 cm for longitudinal joints,
- 10 cm for transverse joints.

#### 3/ ÉQUERRE DE RENFORT (REINFORCEMENT LAYER)

Horizontally, weld the square to the first layer (minimum heel of 10 cm). Vertically, weld the square to the primer impregnated parapet.

#### 4/ HYRENE-HYRANGER 40 FP AR (GLASS FLEECE REINFORCEMENT)

Unroll the HYRENE-HYRANGER 40 FP AR roll, position it and then weld it to the first layer with staggered joints. At the end of the strip, embed the slate flakes with a hot trowel after heating slightly with a gas torch and weld over 15 cm.

#### 5/ FORCE 4000 S (POLYESTER REINFORCEMENT) / TERRAGUM A4.5 (NOT COVERED BY TECHNICAL APPROVAL)

Cut strips to a height of 15 cm from the heel to the vertical part (up to the run-off separator).

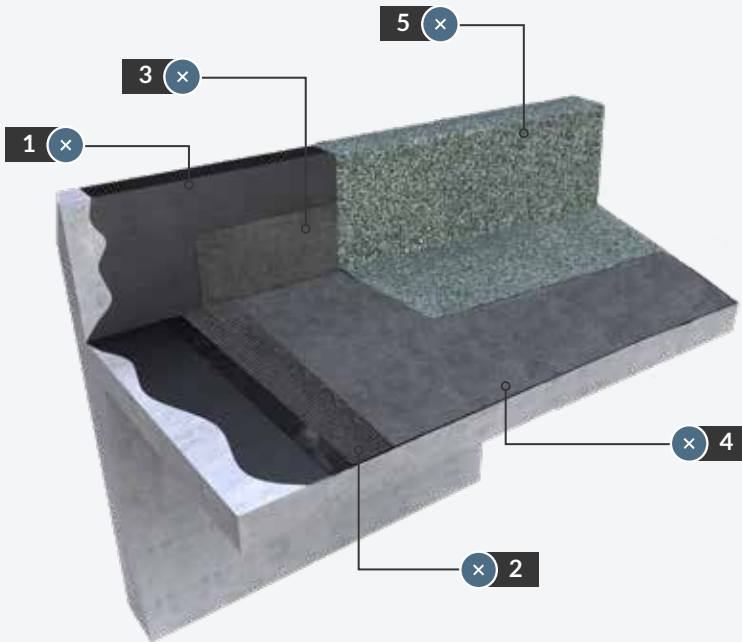
After embedding the flake, weld the heel onto HYRENE-HYRANGER 40 FP AR and, vertically, weld it to the parapet.



# CONCRETE SLABS ON ACCESSIBLE ROOF



Subject to technical approval



■ The solution is MAT 100 for independent installation.

## APPLICATION

### 1/ IKOPRIM / VERNIS ANTAC

Cold application by brush, roller or trowel at a rate of 300 g/m<sup>2</sup>.

### 2/ HYRENE-HYRANGER TS PY / HYRENE-HYRANGER TS PY GRÉSÉ (POLYESTER REINFORCEMENT)

Unroll the HYRENE-HYRANGER TS PY dry roll, position it and weld it in place. Overlapping:

- 6 cm for longitudinal joints,
- 10 cm for transverse joints.

### 3/ ÉQUERRE DE RENFORT (REINFORCEMENT LAYER)

Horizontally, weld the square to the first layer (minimum heel of 10 cm). Vertically, weld the square to the Primer-impregnated parapet.

### 4/ HYRENE-HYRANGER 25/25 TS (GLASS FLEECE REINFORCEMENT)

Unroll the HYRENE-HYRANGER 25/25 TS roll, position it and then weld it onto the first layer with staggered joints. Longitudinal overlaps are welded over 6 cm and end overlaps are welded over 10 cm.

### 5/ FORCE 4000 S (POLYESTER REINFORCEMENT) / TERRAGUM A4.5 (NOT COVERED BY TECHNICAL APPROVAL)

Cut strips to a height of 15 cm from the heel to the vertical part (up to the run-off separator).

Weld the heel to the HYRENE-HYRANGER 25/25 TS and, vertically, weld to the parapet.

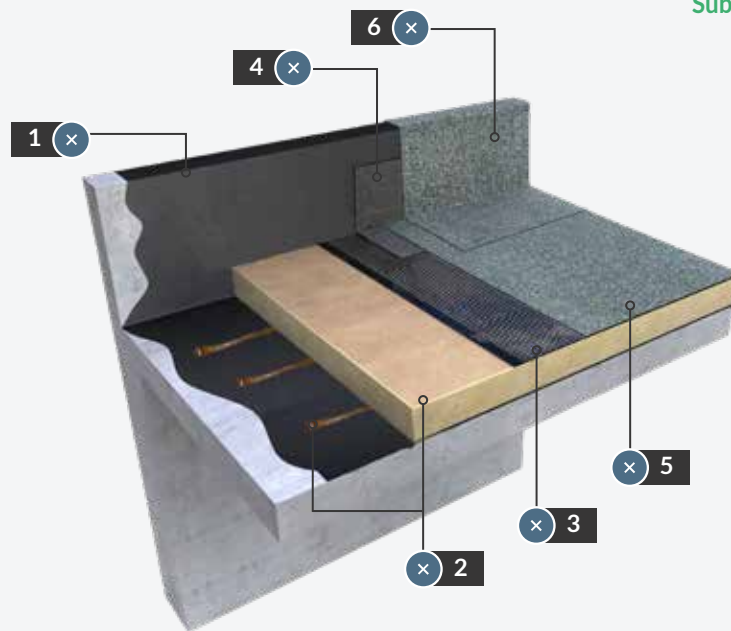


# SYSTEMS UNDER TECHNICAL APPROVAL

## INACCESSIBLE SELF-PROTECTED ROOF WITH INSULATION



Subject to technical approval



### APPLICATION

#### 1/ IKOPRIM / VERNIS ANTAC

Cold application using a brush, roller, or trowel at a rate of 300 g/m<sup>2</sup>.

#### 2/ INSULATION + ADHESIVES

Glue the insulation boards (PUR / PIR / PSE) with HYRA STIK in staggered joints (see page 9).

#### 3/ HYRENE-HYRANGER SPOT ST (POLYESTER REINFORCEMENT)

Self-adhesive application: the release film must be removed before applying HYRENE-HYRANGER SPOT ST to the substrate.

The width of the longitudinal overlap joint is 70 mm.

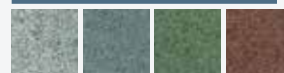
#### 4/ ÉQUERRE DE RENFORT (REINFORCING ANGLE)

Horizontally, weld the square to the first layer (minimum heel of 10 cm). Vertically, weld the square to the Primer-impregnated parapet.

#### 5/ HYRENE-HYRANGER 40 FP AR (GLASS FLEECE REINFORCEMENT)

Unroll the HYRENE-HYRANGER 40 FP AR roll, position it, then weld it to the HYRENE-HYRANGER SPOT ST with staggered joints. At the end of the roll, embed the slate flakes with a hot trowel after lightly heating with a gaz torch, and weld over 15 cm.

#### AVAILABLE COLOURS:



white, grey, green, red

#### 6/ FORCE 4000 S (POLYESTER REINFORCEMENT) / TERRAGUM A4.5 (NOT COVERED BY TECHNICAL APPROVAL)

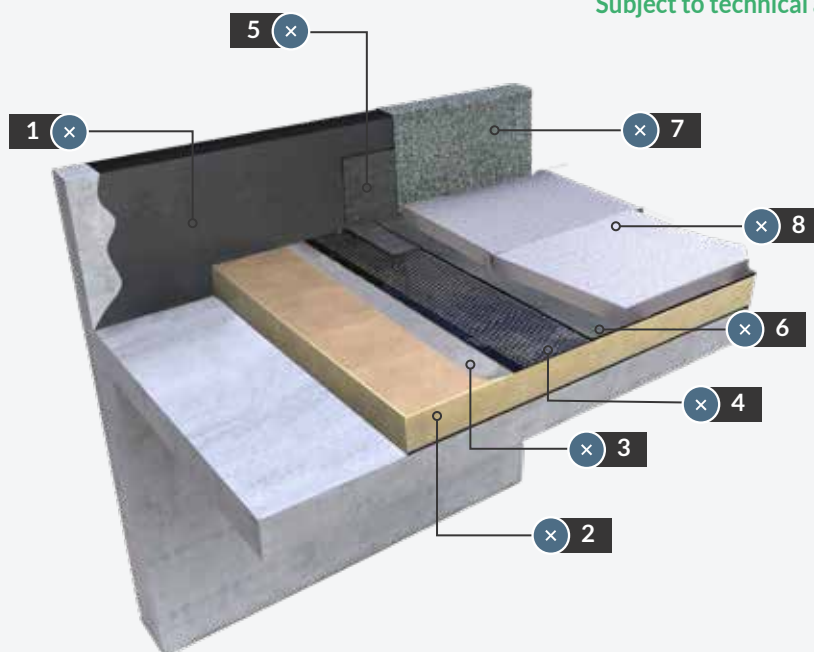
Cut strips to a height of 15 cm from the heel to the vertical part (up to the run-off separator).

After embedding the flake, weld the heel onto HYRENE-HYRANGER 40 FP AR and, vertically, weld it to the acroterion.

# ACCESSIBLE ROOF WITH INSULATION



Subject to technical approval



## APPLICATION

### 1/ ÉQUERRE DE RENFORT (REINFORCING ANGLE)

Vertically, weld the angle to the primed parapet over a height equal to the thickness of the insulation + 6 cm.

### 2/ INSULATION

Lay the insulation boards (PUR / PIR / PSE) loosely and edge-to-edge, with staggered joints.

### 3/ MAT 100

Unroll dry with a 10 cm overlap.

### 4/ HYRENE-HYRANGER TS PY / HYRENE-HYRANGER TS PY GRÉSÉ

Unroll the HYRENE-HYRANGER TS PY dry roll and position it. Only the overlap joints are welded:

- 6 cm for longitudinal joints,
- 10 cm for transverse joints.

### 5/ ÉQUERRE DE RENFORT (REINFORCING ANGLE)

Horizontally, weld the square to the first layer (minimum heel of 10 cm). Vertically, weld the square to the primer-impregnated parapet.

### 6/ HYRENE-HYRANGER 25/25 TS

Unroll the HYRENE-HYRANGER 25/25 TS roll, position it and then weld it onto the first layer with staggered joints. Longitudinal overlaps are welded over 6 cm and end overlaps are welded over 10 cm.

### 7/ FORCE 4000 S

Cut strips to a height of 15 cm from the heel to the vertical part (up to the run-off separator).

Weld the heel to the HYRENE-HYRANGER 25/25 TS and, vertically, weld to the parapet.

### 8/ HEAVY-DUTY PROTECTION

# SYSTEMS UNDER TECHNICAL APPROVAL

## PLANTED ROOF OR GARDEN



Subject to technical approval

### APPLICATION

#### 1/ IKOPRIM / VERNIS ANTAC

Cold application by brush, roller or trowel at a rate of 300 g/m<sup>2</sup>.

#### 2/ HYRENE-HYRANGER 25/25 TS (GLASS FLEECE REINFORCEMENT)

Weld the membrane to the impregnated concrete. Subsequent strips are welded at staggered joints, with longitudinal and end overlaps welded over 6 cm.

#### 3/ HYRENE-HYRANGER 35 PY RGH (POLYESTER REINFORCEMENT)

Cut HYRENE-HYRANGER 35 PY RGH strips to a height of 10 cm from the heel to the vertical part (up to the run-off separator).

Weld the heel to the HYRENE-HYRANGER 25/25 TS and weld vertically to the impregnated parapet. The overlap between strips is 6 cm.

#### 4/ FORCE 3000 TRAFIC (POLYESTER REINFORCEMENT)

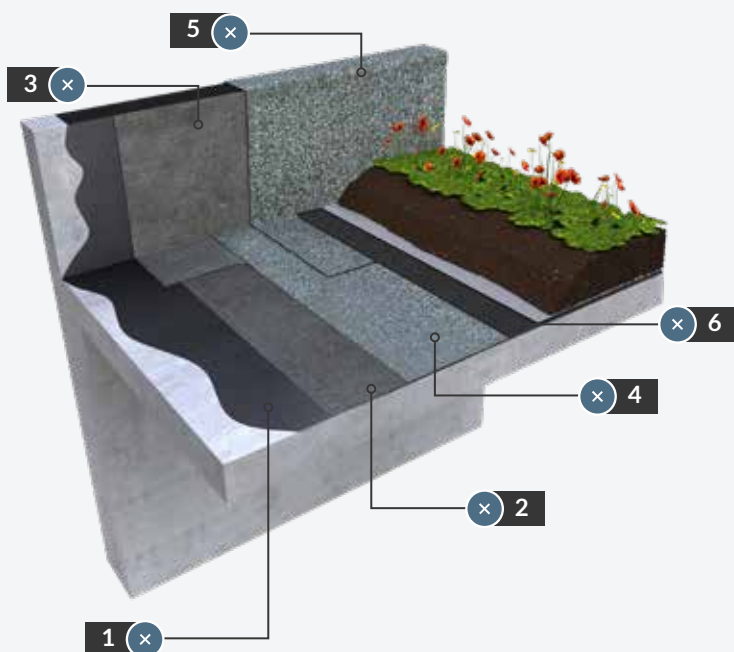
Unroll the FORCE 3000 TRAFIC roll, position it and then weld it to the HYRENE-HYRANGER 25/25 TS with staggered joints. Longitudinal and transverse joints are 10 cm.

#### 5/ FORCE 3000 TRAFIC (POLYESTER REINFORCEMENT)

Cut FORCE 3000 TRAFIC strips to a height of 15 cm from the heel to the vertical part (up to the run-off separator). After embedding the flake, weld the heel to the FORCE 3000 TRAFIC and, vertically, weld to the parapet.

#### 6/ DELTA TERRAXX / DRAIN AND FILTER AXTER

The DRAIN is laid edge to edge, loosely over the drain layer. The filter layer is unrolled onto the drain. If DELTA TERRAXX, it is unrolled freely on the waterproofing.

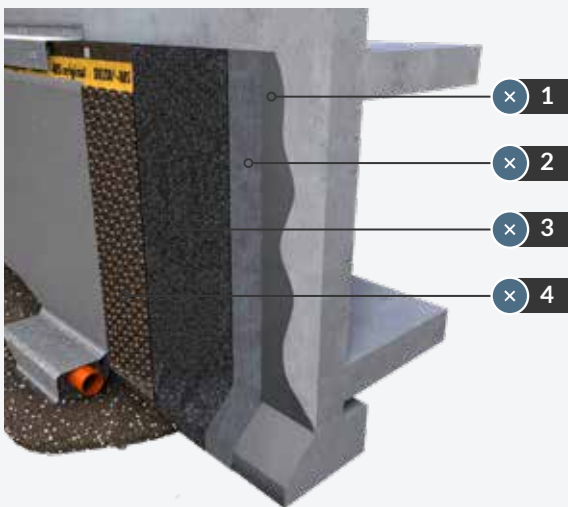


# BASEMENT WALLS



Subject to technical approval

## TWO-LAYER SYSTEM



### APPLICATION

#### 1/ IKOPRIM / VERNIS ANTAC

Cold application by brush, roller or trowel at a rate of 300 g/m<sup>2</sup>.

#### 2/ HYRENE-HYRANGER 25/25 TS (GLASS FLEECE REINFORCEMENT)

Weld the membrane to the impregnated concrete. Subsequent strips are welded at staggered joints, with longitudinal and end overlaps welded over 6 cm.

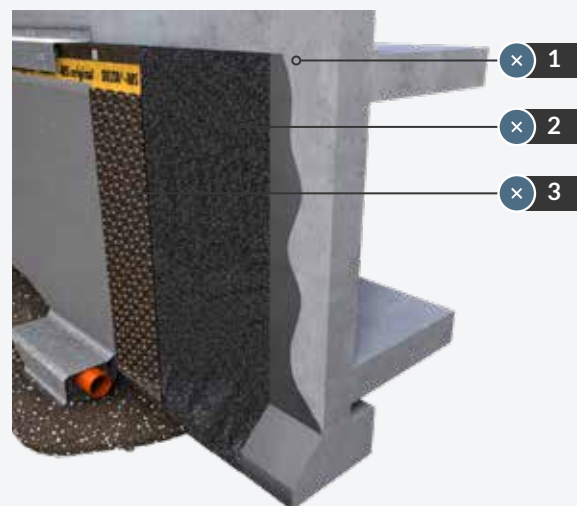
#### 3/ FORCE 3000 TRAFIC (POLYESTER REINFORCEMENT)

Unroll the roll, position it and then weld it to the HYRENE-HYRANGER 25/25 TS with staggered joints. Longitudinal and transverse joints are 10 cm. Mechanical fastenings must be applied at the head lap of the membrane, fixed at every 25 cm.

#### 4/ DELTA MS PROTECTION OR EQUIVALENT

Protection fastened at the top with fastenings every 50 cm. If there is an overlap, then overlap by 5 alveolus (bridge the joints with cold adhesive tape).

## ONE-LAYER SYSTEM



### APPLICATION

#### 1/ IKOPRIM / VERNIS

Apply cold with a brush, roller or trowel at a rate of 300 g/m<sup>2</sup>.

#### 2/ FORCE 4000 TRAFIC (POLYESTER REINFORCEMENT)

Unroll the roll, position it and then weld it to the staggered joint substrate. Longitudinal and transverse joints are 10 cm. mechanical fastenings must be applied at the head lap of the membrane at every 25 cm.

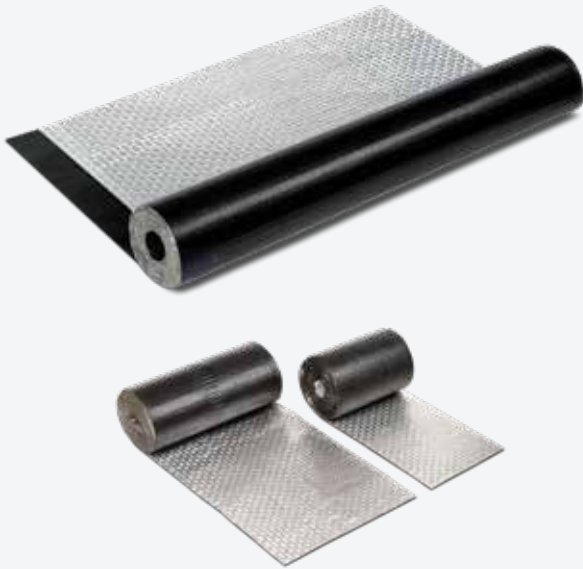
#### 3/ DELTA MS PROTECTION OR EQUIVALENT

Protection fastened at the top with fastenings every 50 cm. If there is an overlap, then overlap by 5 cells (bridge the joints with cold adhesive tape).

# ALUMINIUM & ECO RANGES

## PAXALU 40 SBS / PAXALU 30 SBS / PAXA 40 SBS

### SELF-PROTECTING MEMBRANE WITH SBS BINDER AND GLASS MAT REINFORCEMENT



#### FEATURES

- **UNDERFACE FINISH:** film
- **SURFACE FINISH:** embossed aluminium

#### APPLICATION

PAXALU 40 and 30 SBS, and PAXA 40 SBS can be fully welded with a gaz torch or bonded with hot bitumen. Longitudinal overlaps are 7 cm, transverse overlaps 15 cm.

PAXA and PAXALU membranes are classics within our range - they have been in use for over 30 years and loved by professional waterproofers, thanks to their weldability and longevity.

#### LOGISTICS AND FEATURES

		Dimensions	Surface mass	Packaging	Storage
PAXA 40 SBS	★	W: 1 m L: 10 m	2.42 kg/m <sup>2</sup>	36 rolls / pallet	Upright, without stacking
PAXALU 30 SBS	★★	W: 1 m L: 10 m	2.75 kg/m <sup>2</sup>	30 rolls / pallet	
PAXALU 40 SBS	★★★	W: 1 m L: 10 m	3.5 kg/m <sup>2</sup>	25 rolls / pallet	



#### FIND OUT MORE

Cut strips of upstands from the same rolls as the current section. The upstand strips are welded by removing the aluminium surface of the current section under the heel.

# SBS ECO RANGE

## TWO-LAYER SYSTEM



**TERRAGUM A 3 F/F (POLYESTER REINFORCEMENT)**

**APP binder-based membrane with polyester reinforcement**

**Excellent heat resistance, enhanced reinforcement, APP-modified bitumen**

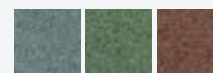
Underface finish: thermofusible film

Surface finish: thermofusible film

### APPLICATION

With a gaz torch.

Store rolls upright, without stacking..



gris, vert, rouge

**TERRAGUM A 3.5 KG G / TERRAGUM A 4.5 KG**

**Self-protected membrane based on APP binder with polyester reinforcement.**

**High heat resistance, enhanced reinforcement, APP bitumen.**

Underface finish: thermofusible film

Surface finish: coloured slate flakes

### APPLICATION

With a gaz torch.

Store rolls upright, without stacking.



**HYRENE-HYRANGER 3000 PY AR (SBS BINDER)**



grey, green, red

**Self-protected membrane with SBS binder and polyester reinforcement**

HYRENE-HYRANGER 3000 PY AR is a membrane with an elastomeric bitumen binder, stabilised polyester reinforcement, and mineral self-protection. The minimum width of the bare strip is 70 mm.

Second layer of a waterproofing system for inaccessible flat roofs without additional protection (on concrete, wood, or steel substrates).

### APPLICATION

Applied with a gaz torch. Store rolls upright, without stacking.

# SPECIFIC APPLICATIONS

## HYRÈNE 3000 FP ALU REFLECT



Under specifications



### LOAD-BEARING ELEMENTS (SLOPE $\geq$ 3%)



Concrete



Steel



Wood

### TYPES OF WORK



New



Refurbishment



Change of use

### FINISH

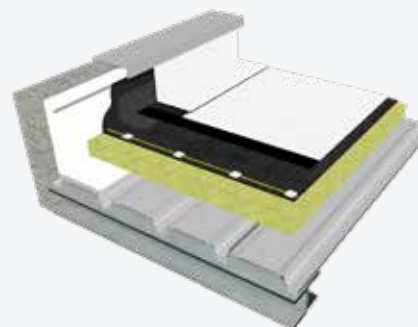
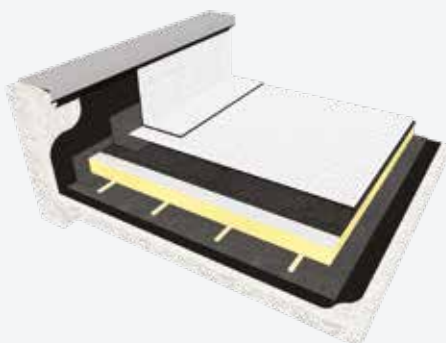
Self-protected

### APPLICATION

Welded onto the first layer adapted to the substrate

## WHY CHOOSING HYRÈNE 3000 FP ALU REFLECT ?

- A Solar Reflectance Index (SRI) of 95: this highly reflective membrane behaves almost like a mirror, helping to reduce heat absorption by buildings
- Subject under Technical Approval
- Excellent ageing resistance thanks to its aluminium surface finish
- Easy roof maintenance due to the smooth aluminium surface
- Great versatility, as the aluminium-finished membrane is compatible with all base layers selected according to the type of load-bearing element
- Compatible with all types of insulation: PUR, PIR, EPS, rock wool, cellular glass



# SLATE-FINISHED MEMBRANE

**WHITE FLAKES FOR A LIGHT-REFLECTING EFFECT**



ALPALU specifications approved by  
QUALICONSLT



Two-layer solution: 2<sup>nd</sup> coat self-protected over all AXTER 1<sup>st</sup> coats.

## LOAD-BEARING ELEMENTS



Concrete



Steel



Wood

## TYPES OF WORK



New



Refurbishment



Change of use

## FINISH

Self-protected

## APPLICATION

Welded onto the first layer adapted to the substrate

## WHICH SOLUTION ?

		HYRÈNE 3000 FP ALU REFLECT	SLATE-FINISHED MEMBRANE
SINGLE-LAYER			X
TWO-LAYER		X	X
TYPES OF WORK		NEW & REFURBISHMENT	NEW & REFURBISHMENT
LOAD-BEARING ELEMENTS	STEEL	IF SLOPE $\geq$ 3%	X
	CONCRETE	IF SLOPE $\geq$ 3%	X
	WOOD	IF SLOPE $\geq$ 3%	X
EASY CLEANING		X	
AGEING RESISTANCE		+++	+
SRI (SOLAR REFLECTANCE INDEX)		<b>95</b>	<b>45</b>

# SPECIFIC APPLICATIONS

## FORCE 4000 PONT

THE IDEAL SOLUTION FOR WATERPROOFING

ALL TYPES OF BRIDGE DECKS



### DESCRIPTION

FORCE 4000 PONT is a membrane with an SBS binder and stabilised polyester reinforcement.

Application is carried out by full-surface heat welding onto a substrate primed with VERNIS ANTAC GC.

### CHARACTERISTICS

- **Durable and reliable** single-layer system.
- **Excellent weld** strength.
- **Hot bitumen applied** directly onto FORCE 4000 PONT.

# FORCE 4000 PONT



## APPLICATION

### 1/ BRIDGE DECK

The bridge deck must be clean, free of dust, oil, grease, etc.

### 2/ VERNIS ANTAC GC

Application of a bituminous primer coat (VERNIS ANTAC GC) on the main areas and upstands:

- Concrete substrate: 150 g/m<sup>2</sup>
- Metal substrate: 100 g/m<sup>2</sup>

### 3/ FORCE 4000 PONT (MAIN AREAS AND UPSTANDS)

Unroll the membrane to position it. Fully weld the membrane with a gaz torch to ensure complete adhesion.

### 4/ BITUMINOUS CONCRETE

Apply hot bituminous concrete directly onto FORCE 4000 PONT. Compact the bituminous concrete using suitable equipment.

# LIQUID APPLICATIONS

## STARCOAT PRO X

### A SINGLE COLD-APPLIED RESIN

STARCOAT PRO X is a liquid polyurethane resin waterproofing system suitable for all types of work, new or renovation, on load-bearing concrete elements. It is ready to use and easy to apply. When dry, it forms an elastic, waterproof membrane that is resistant and adherent to the substrate.

### TECHNICAL AND AESTHETIC PERFORMANCE



#### FLAMELESS

Flameless installation, ideal for work near sensitive components (PVC joinery, skylights)



#### RESISTANCE

UV-resistant



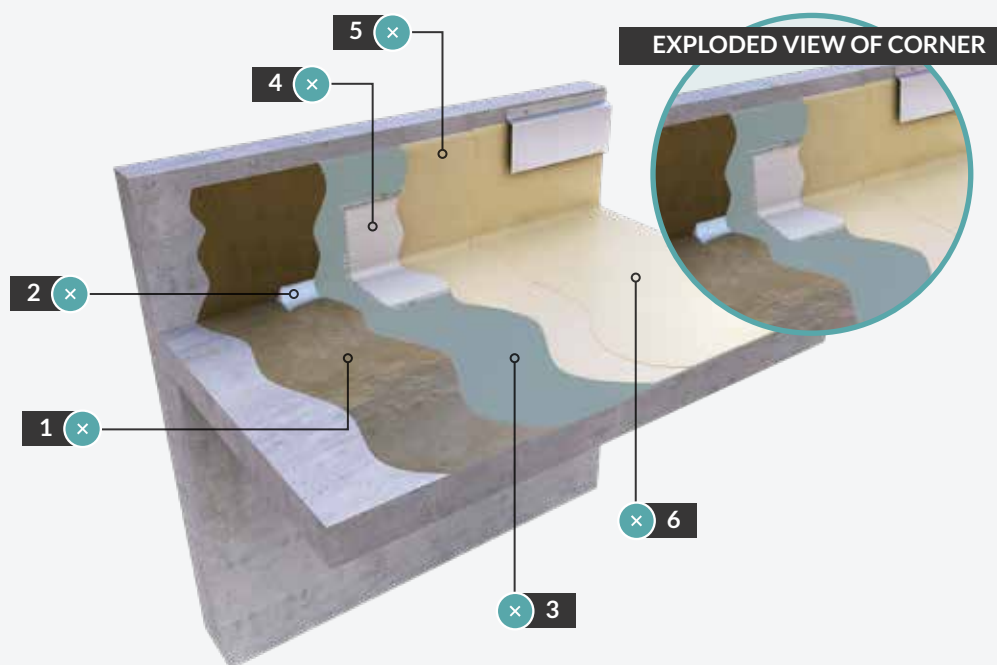
#### FINISH

5 different finishes for an aesthetically pleasing result



#### CLIMATE

Temperature resistant (-20°C to +90°C)



### FEATURES

- Single-component polyurethane formula, **no catalyst required, ready for application.**
- **Fast drying time** (6 to 12 hours per coat)
- **Estimated lifespan 25 years in a reinforced system** (W3 classification).
- SE4 and SE5

# STARCOAT PRO X

## APPLICATION

### 1/ PRIMCOAT PRO X R4

Apply the primer to all of the surfaces to be treated and leave to dry for between 2 and 6 hours. Primer to be applied to porous substrates with a maximum moisture content of 4%.

### 2/ STARCOAT PRO X MASTIC

Apply a bead of STARCOAT PRO X MASTIC to the corner.

### 3/ MATCOAT R

Apply a 400 g/m<sup>2</sup> coat of STARCOAT PRO X and press in whilst wet the MATCOAT R reinforcement layer

### 3/ STARCOAT PRO X

Apply 2 coats of STARCOAT PRO X using a brush, roller or airless sprayer.

Degassing between coats. Start by treating the upstands and cross-lapping the layers. Leave to dry for between 2 and 6 hours.

Choose two colours to check overlaps.

### 4/ STARCOAT PRO X COLOURED FINISH

Clear, coloured or coloured flake finishing resin.

## 7 KEY POINTS FOR A SUCCESSFUL PROJECT

- 1 Lay on concrete that is more than 28 days old
- 2 Check that there are no slope or flatness defects (these cannot be corrected with resin).
- 3 Make sure the substrate is perfectly clean and free of dust.
- 4 Measure hygrometry.
- 5 Carry out checks on the substrate's cohesion, dryness and porosity.
- 6 Apply to a substrate where the temperature is at least 3°C above the dew point.
- 7 Apply in dry weather when the ambient temperature is between 5°C and 35°C.

## COMPLEMENTARY PRODUCTS



**PRIMCOAT PRO X EPOXY** two-component for damp substrates



**PRIMCOAT PRO X PU** on sanded tiles

**PRIMCOAT R** for repairing bituminous membranes



**MATCOAT R** for waterproofing upstands and single points



**MATCOAT 100** for reinforcing the current section of a refurbishment

**MATCOAT JD** for expansion joints



**STARCOAT PRO X ACCELERATOR** for quick drying, to be diluted in STARCOAT PRO X

**STARCOAT PRO X THIXO ADDITIVE** to mix with STARCOAT PRO X to make it less liquid

**STARCOAT PRO X THIXO** for single points or EP and very sloping roofs, recommended for upstands



**STARCHIPS** aesthetic finishing chips are also available

**DILUCOAT** solvent for cleaning tools

## SOLUTIONS TABLE

	PRIMER CHOICE			
	PRIMCOAT® PRO X EPOXY	PRIMCOAT® PRO X R4	PRIMCOAT® R	PRIMCOAT® PRO X PU
DRY CONCRETE (MOISTURE CONTENT ≤4.5%)	250 g/m <sup>2</sup>	100 g/m <sup>2</sup>	150 g/m <sup>2</sup>	
DAMP, NON-WEeping CONCRETE (MOISTURE CONTENT ≤6%)	300 g/m <sup>2</sup>	100 g/m <sup>2</sup>	150 g/m <sup>2</sup>	
SCREED OR CEMENT RENDERING (REPAIR ONLY)	250 g/m <sup>2</sup>	100 g/m <sup>2</sup>	150 g/m <sup>2</sup>	
BITUMINOUS MEMBRANE			250 g/m <sup>2</sup>	
SANDED TILES				50 g/m <sup>2</sup>
METAL ACCESSORIES (UPSTANDS)		100 g/m <sup>2</sup>		
VERY CLOSED CONCRETE (LOW POROSITY)	250 g/m <sup>2</sup>	100 g/m <sup>2</sup>	150 g/m <sup>2</sup>	

	TYPE OF ROOF	PRIMER	SOLUTIONS		
			STARCOAT®PRO X		FINISH = 200 g/m <sup>2</sup>
			1.2 mm = 2x750 g/m <sup>2</sup>	1.5 mm = 2x750 g/m <sup>2</sup> + 300 g/m <sup>2</sup>	
VISIBLE	ACCESSIBLE, BALCONY, LOGGIA, PASSAGEWAY, GRANDSTAND, TIER, PEDESTRIANS	✓	✓		✓
	INACCESSIBLE, TECHNICAL OR WITH TECHNICAL AREA	✓	✓		✓
UNDER PROTECTION	INACCESSIBLE	✓	✓		✓
	TECHNICAL OR TECHNICAL AREA	✓	✓		✓
	PEDESTRIAN ACCESS: BALCONIES, LOGGIAS, PASSAGEWAYS, GRANDSTANDS, BLEACHERS	✓	✓		✓
	ACCESSIBLE WITH BONDED TILES: BALCONIES, LOGGIAS, PASSAGEWAYS, GRANDSTANDS, ROOFS, PEDESTRIANS	✓		✓	✓

	DRYING AND RECOATING TIME AT 20°C:					
	PRIMCOAT® PRO X EPOXY	PRIMCOAT® PRO X R4	PRIMCOAT® R	PRIMCOAT® PRO X PU	STARCOAT® PRO X	STARCOAT® PRO X FINISH
DRY TO THE TOUCH	3 hours	1 - 2 hours	2 - 4 hours	1 hour		5 hours
DRY TO TRAFFIC	3 - 6 hours	3 - 4 hours	4 - 6 hours	1 hour	6 - 12 hours	12 hours
RECOATING TIME MIN > MAX	6 > 24 hours	3 > 6 hours	6 > 48 hours	1 > 3 hours	24 hours before FINISH 48 hours between coats	

	UPSTANDS			
	PRIMER	STARCOAT® PRO X MASTIC	400 g of STARCOAT® PRO X + MATCOAT® R	STARCOAT® PRO X (2x750 g/m²)
TYPES OF UPSTANDS				
STANDARD CASE	✓	✓	✓	✓

TABLE

STARCOAT® PRO X FINISH		PROTECTION					
PIGMENT PASTE = 10% OF FINISH	SILICA	WITHOUT SUPPLEMENTARY PROTECTION	GRAVEL	UNCOUPLED SLABS	DSP	SCREED + TILING	BONDED TILES
✓	✓	✓					
✓		✓					
✓			✓				
				✓			
					✓	✓	
	✓						✓



**FIND OUT MORE**

SEL should not be applied in the rain.  
The minimum substrate temperature must be 3°C above the dew point temperature.

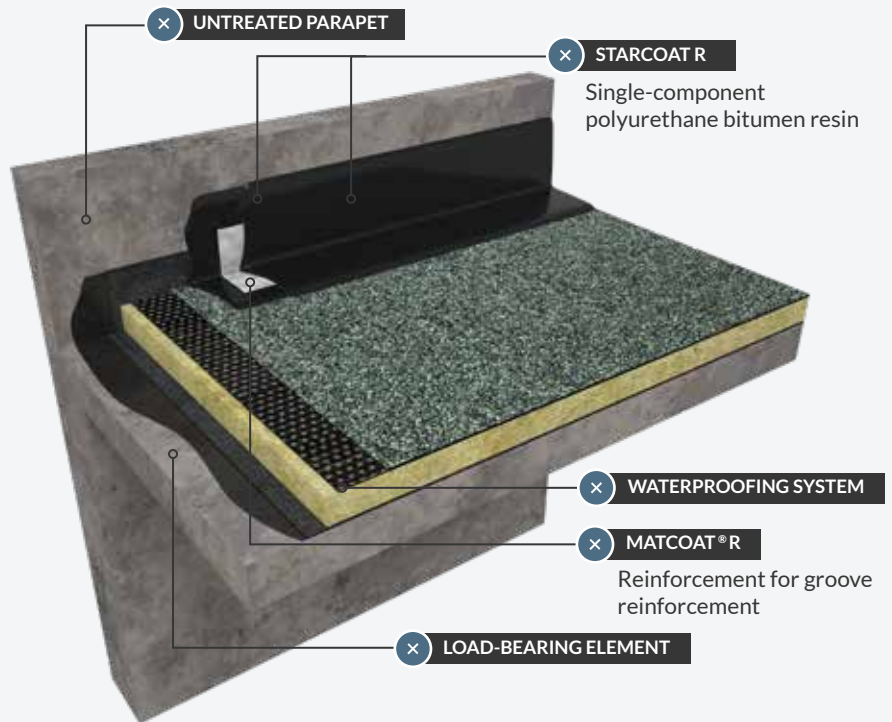
The ambient and substrate temperatures must be greater than or equal to 5°C and less than 40°C.  
Maximum air humidity must be less than 85%.

# LIQUID APPLICATIONS

## STARCOAT R

### READY-TO-USE SEALING RESIN

Reliable and ready to use, STARCOAT R is a unique, single component polyurethane bitumen resin, with integrated anti-root protection. Starcoat R is the ideal waterproofing solution for complex detailing, localised repairs to new and old bitumen membranes and areas where use of a naked flame is prohibited..



### LOGISTICS AND FEATURES

	Weight	Packaging	Storage
<b>STARCOAT R</b>	20 kg	30 cans / pallet	1 year in original unopened packaging
	4 kg	24 boxes of 4 cans / pallet	
<b>MATCOAT R</b>	W: 0.15 m L: 50 m	144 rolls / pallet	



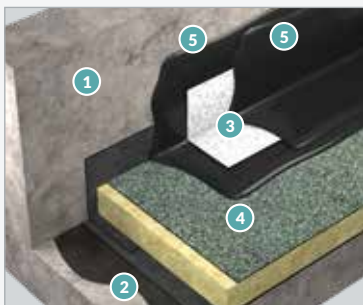
# STARCOAT R

## APPLICATION

### ON UPSTANDS

With excellent primerless adhesion to most materials, STARCOAT R is ideal for all types of upstands.

#### CLASSIC UPSTAND



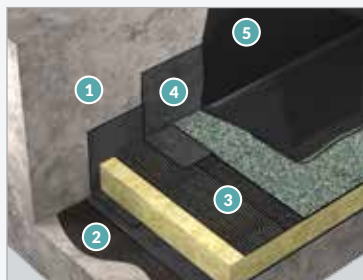
- 1 Untreated parapet
- 2 Load-bearing element
- 3 MATCOAT R
- 4 Waterproofing system
- 5 STARCOAT R

#### APPLICATION: 2 x 700 g/m<sup>2</sup>

STARCOAT R is applied in two coats of 700 g/m<sup>2</sup> each to the finished waterproofing detail (heel and height 15 cm). The first coat enables MATCOAT R (or MATCOAT JD) to be applied.

The second coat covers the reinforcement and forms a flexible film.

#### MIXED UPSTAND



- 1 Untreated parapet
- 2 Load-bearing element
- 3 Waterproofing system
- 4 ÉQUERRE DE RENFORT 35 PY
- 5 STARCOAT R

#### APPLICATION: 1 x 800 g/m<sup>2</sup>

The 35 PY angle strip is welded to the 1st layer of the waterproofing system.

A layer of STARCOAT R is applied to the 2nd layer of waterproofing at a rate of 800 g/m<sup>2</sup>, 5 cm higher than the 35 PY CORNER BAND, at the heel and at the top.

## APPLICATION

### IN GUTTERS

Simple, practical application for gutters and spot repairs to waterproofing.

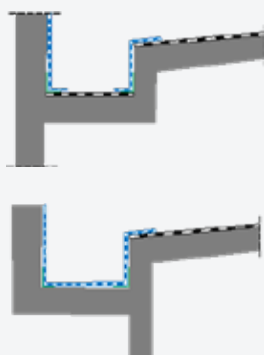
#### METAL GUTTERS



#### APPLICATION: 2 X 700 g/m<sup>2</sup> + MATCOAT INSTALLATION 1 x 300 g/m<sup>2</sup>

A strip of MATCOAT R is adhered to a layer of STARCOAT R of approximately 300 g/m<sup>2</sup> only at gutter junctions and rainwater inlet systems (EEP). After drying, STARCOAT R is applied in 2 coats of 700 g/m<sup>2</sup> each.

#### CONCRETE GUTTERS



#### INTERNAL GUTTERS DOMINATING THE ENCLOSED PARTS OF THE BUILDING CONSUMPTION: 2 x 700 g/m<sup>2</sup>

the gutter should be lined with a compatible membrane, installed in accordance with local regulations. STAR COAT R should then be applied thereabove and continued across the face of the upstand.

#### GUTTERS DOMINATING THE NON-ENCLOSED PARTS OF THE BUILDING CONSUMPTION: 2 x 700 g/m<sup>2</sup>

A strip of MATCOAT R is taped onto a layer of STARCOAT R weighing approximately 300 g/m<sup>2</sup> in the corner of the upstand. STARCOAT R can be applied to the entire surface at a rate of 2 x 700 g/m<sup>2</sup>.

# ACCESSORIES

## DEPCO

### A COMPLETE RANGE OF RAINWATER OUTLETS FOR BITUMINOUS WATERPROOFING

DEPCO is a rainwater outlet system (EEP) that, installed correctly, provide drainage from waterproofed roofs. It comes in a wide range of diameters. Created in 2006, DEPCO is a genuine innovation that has become a benchmark in the waterproofing sector.

#### INNOVATIVE THANKS TO ITS UNIQUE DESIGN



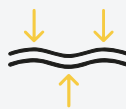
##### READY-TO-USE PRODUCT

No primer required to plate



##### RELIABLE WATERPROOFING

Pre-welded bituminous flange guarantees waterproof integrity and weldability of the waterproofing system.



##### OPTIMUM ADAPTABILITY

DEPCO adapts to all substrates and roof shapes, even complex ones



##### LIGHTWEIGHT AND DURABLE

Shock-resistant, the DEPCO is easy to handle and stock



##### ECO-FRIENDLY

DEPCO does not require priming

EXPANDED CRIMP



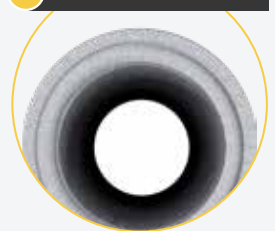
PLATE



- Plate made with HYRENE-HYRANGER TS PY
- 180 g/m<sup>2</sup> reinforcement with thermofusible film on the underside and macro-perforated surface

H = 600 mm

SHEARED EYELET



Suitable for horizontal installation

RIGID ALUMINIUM TUBE

- Thickness 12/10<sup>th</sup> to 15/10<sup>th</sup>
- Height adapted to thick insulation

# DEPCO

## APPLICATION

### FAST, SIMPLE AND RELIABLE INSTALLATION

TO HELP YOU SAVE TIME



**1**

#### INSERT

Once the 1<sup>st</sup> layer of waterproofing has been laid, insert the DEPCO into the recess.



**3**

#### COVER

The 2<sup>nd</sup> layer of waterproofing is welded on and completely covers the DEPCO.



**2**

#### WELD

Weld the DEPCO elastomer plate to the first layer of waterproofing.



**4**

#### CUT

Leave to cool for a few moments and cut the hole in the DEPCO.

#### PACKAGING ACCORDING TO DIAMETER

ITEM CODE	COMMERCIAL NAME	DIAMETERS INT / EXT (mm)	PACKAGING	GENCOD CODE
189B050	DEPCO HYRENE EEP DIAM 50	46.4 / 49	Box of 15	3563460058709
189B063	DEPCO HYRENE EEP DIAM 63	59.4 / 62	Box of 15	3563460058716
189B075	DEPCO HYRENE EEP DIAM 75	71.64 / 74	Box of 15	3563460058723
189B085	DEPCO HYRENE EEP DIAM 85	81.2 / 84	Box of 15	3563460058730
189B090	DEPCO HYRENE EEP DIAM 90	86.64 / 89	Box of 15	3563460058747
189B095	DEPCO HYRENE EEP DIAM 95	91.64 / 94	Box of 15	3563460058754
189B100	DEPCO HYRENE EEP DIAM 100	98.14 / 100.5	Box of 10	3563460058761
189B110	DEPCO HYRENE EEP DIAM 110	106 / 109	Box of 10	3563460058778
189B115	DEPCO HYRENE EEP DIAM 115	111.2 / 114	Box of 10	3563460058785
189B120	DEPCO HYRENE EEP DIAM 120	115.9 / 119	Box of 10	3563460058792
189B125	DEPCO HYRENE EEP DIAM 125	120.8 / 124	Box of 10	3563460058801
189B145	DEPCO HYRENE EEP DIAM 145	140.6 / 144	Box of 10	3563460058815
189B155	DEPCO HYRENE EEP DIAM 155	150.6 / 154	Box of 10	3563460058822
189B195	DEPCO HYRENE EEP DIAM 195	189.6 / 194	Box of 6	3563460058839

# STICKFLEX

## FLEXIBLE SELF-ADHESIVE SEALING TAPE WITH SBS ELASTOMER BINDER



### APPLICATION

STICKFLEX will cold bond to a variety of substrates: wood, concrete, terracotta, tiles, steel, bituminous sheeting, etc.

The substrate must be clean, dry and free from dust and loose particles. Apply in dry weather, at an ambient temperature of minimum 5°C.

### FEATURES

- **UNDERFACE FINISH:** self-adhesive bitumen protected by a peel-off film.
- **SURFACE FINISH:** aluminised film. High adhesive power **when cold.**
- It is flexible and can be laid on any surface (sound, clean and dry) **without the need for an adhesion primer.**

### PACKAGED IN ROLLS

Dimensions	Number of reels / box
10 m x 7.5 cm	24
10 m x 10 cm	18
10 m x 15 cm	12
10 m x 20 cm	6
10 m x 30 cm	6
10 m x 50 cm	1
10 m x 1 m	1



Axter Coletanche Inc.

Axter Limited

Axter Czech Republic s.r.o.

Head office

Axter Ibérica

Axter Chile

Axter Australia



 **AXTER** COLETANCHE

IKO-AXTER designs, manufactures and markets bituminous waterproofing membranes for flat and sloping roofs, as well as public works and civil engineering structures. These waterproofing systems also include all the additional products and accessories needed for their installation.

Over 40% of IKO-AXTER's sales are exported to more than 70 countries. Our sales and technical teams are committed to working alongside you and, as true partners, are with you every step of the way.

*Avec vous. par dessus tout*

 **HEAD OFFICE**

6 rue Laferrière  
75009 Paris  
[info@axter.eu](mailto:info@axter.eu)

 **CUSTOMER SERVICE FRANCE**

Rue Joseph Coste  
59552 Courchelettes  
Tel. 33 (0)3 59 64 00 37  
[serviceclients@axter.eu](mailto:serviceclients@axter.eu)

 **TECHNICAL SUPPORT**

Rue Joseph Coste  
59552 Courchelettes  
Tel. 33 (0)3 27 93 78 93  
[conseil-technique@axter.eu](mailto:conseil-technique@axter.eu)

[www.axter.eu](http://www.axter.eu)