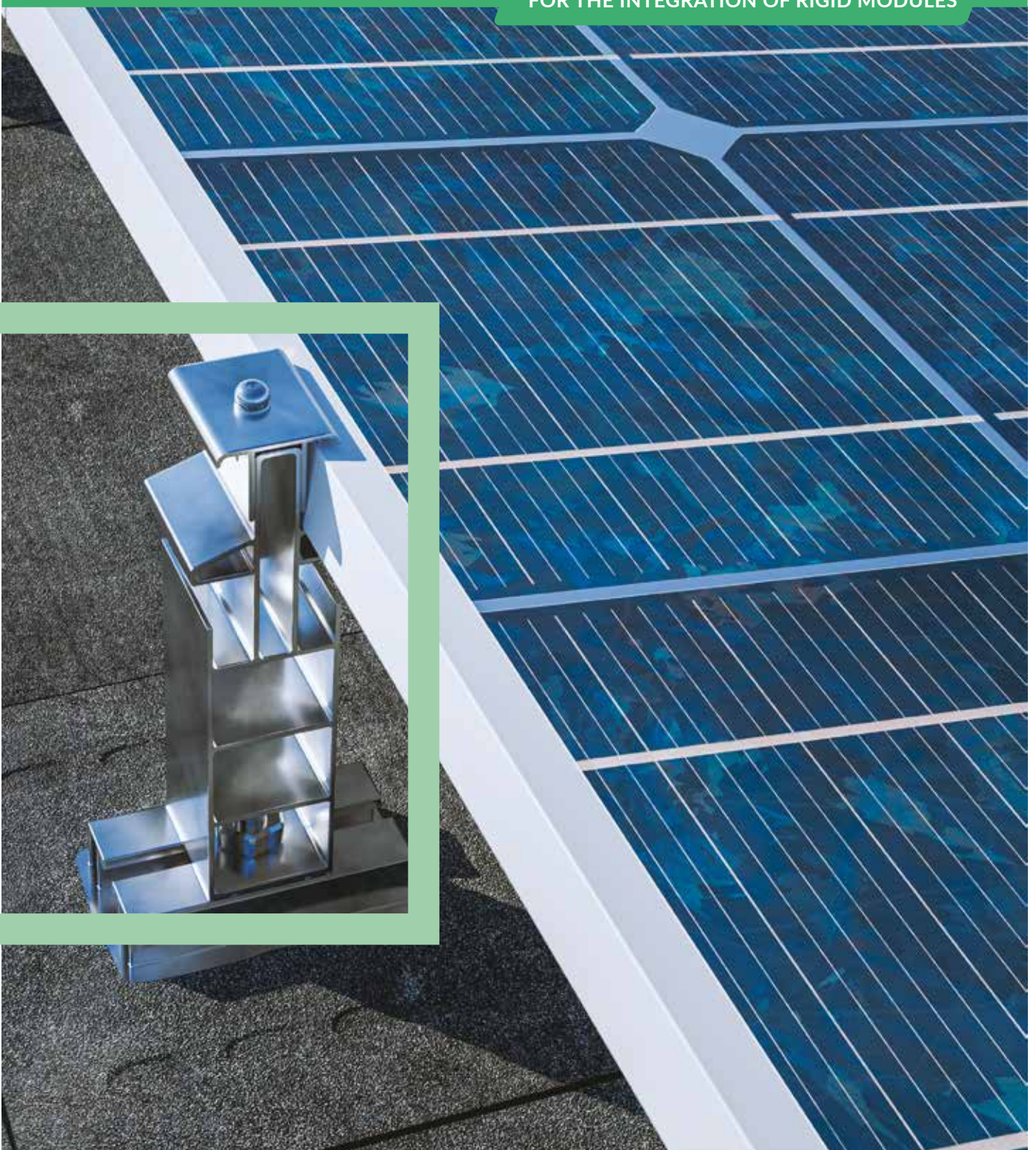


PHOTOVOLTAIC WATERPROOFING SYSTEM

SURFA 5 TOPSOLAR®

FOR THE INTEGRATION OF RIGID MODULES



AXTER

WATERPROOFING SOLUTIONS

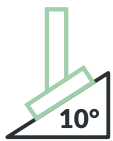
BITUMINOUS SYNTHETIC LIQUID ENVIRONMENTALLY FRIENDLY

SURFA 5 TOPSOLAR®

A PHOTOVOLTAIC SYSTEM THAT STANDS OUT IN ITS TECHNICALITY AND INGENUITY.

With three types of connections, this solution allows **optimal exposure of the panels** and installation at its best performance. The associated Axter waterproofing solutions mean that **SURFA 5 TOPSOLAR® systems adapt to all types of load-bearing elements**, offering **wind resistance capabilities on a par with those found in cyclonic zones**.

PERFORMANCE AT EVERY LEVEL



INCLINATION UP TO 10°

with respect to the roof slope thanks to 3 types of installation.



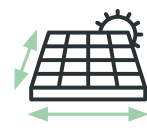
FOR ALL TYPES OF LOAD-BEARING ELEMENTS

Wood, concrete, steel pan decks. Maximum slope 10%.



RUGGEDNESS

System validated in ZONE 5 (cyclone zone).



LARGE CHOICE OF DIMENSIONS

to adapt to all situations.

ALUMINIUM FLANGE

Finalizing the photovoltaic module installation by tightening the flange (A2 stainless steel screws).

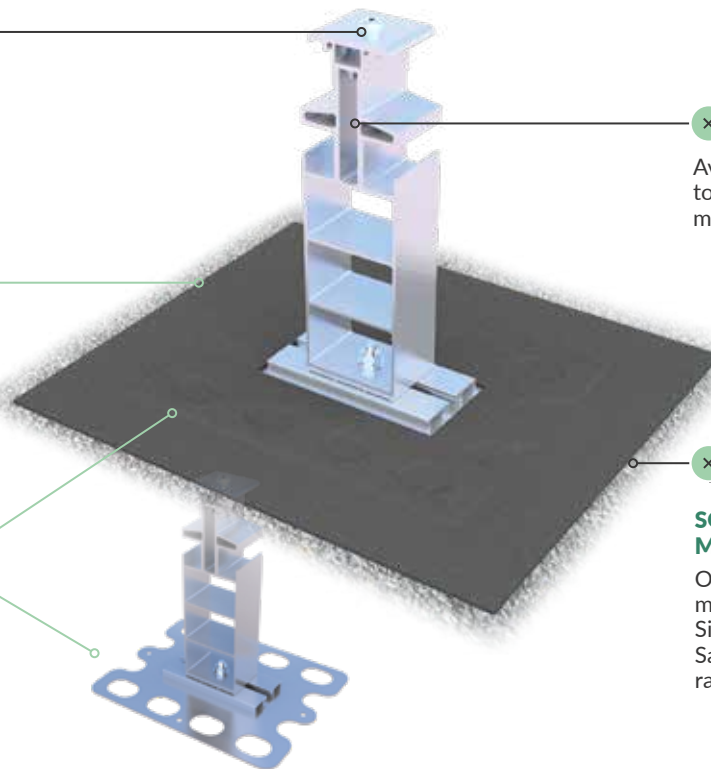
BASE

PANEL

Bituminous membrane/polyester reinforced/film-coated underside/thickness 4 mm/size 320 x 370 mm. Implementation by welding in the actual seal.

ALUMINIUM PLATE

Fitted with a slider to accommodate the bridge-piece and facilitate adjustment during installation.



ALUMINIUM BRIDGE

Available in 3 versions (flat, bottom, top). Adjustable to ensure absolute module panel retention.

WATERPROOFING

SOLAR RANGE BITUMINOUS MEMBRANES

On every type of load-bearing element/mineral wool, EPS, PIR insulation/Single- or double-layer waterproofing/Sandstone or slate surfaces/ Broof (t3) rated system.

SURFASTYL AXTER STEEL ROOF DECKING

SURFASTYL steel roof decking makes SURFA 5 TOPSOLAR® a complete photovoltaic solution, from the bearing element to the attachment of the panels. Implementation has been validated by tests under real life conditions.



SURFASTYL 170/TAN
«GRANDE PORTÉE» (WIDE SPAN)
rib height: 165 mm

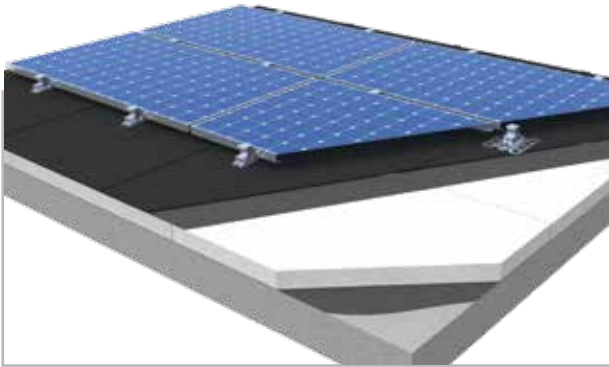


SURFASTYL NT 46/TAN CLASSIQUE
rib height: 46 mm

EXPOSURE :

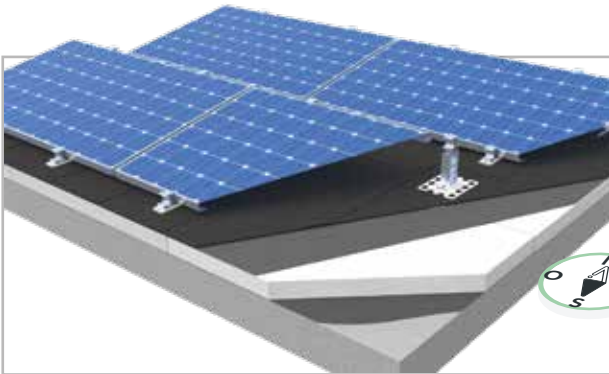
3 POSSIBLE CONFIGURATIONS

UP TO 10° WITH RESPECT TO THE ROOF SLOPE.



LAY FLAT

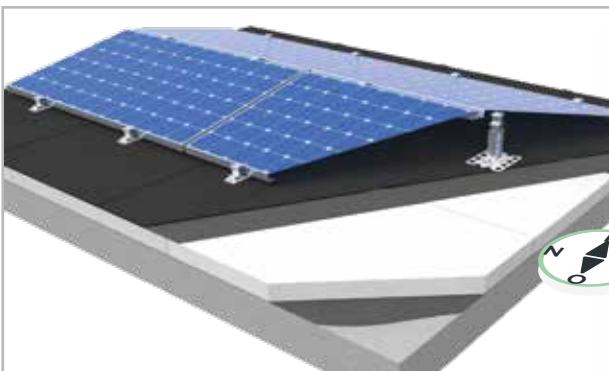
with modules arranged parallel to the roof slope.



SHED INSTALLED

with module inclination of 10°

Suitable for roofs allowing orientation of modules facing south or north.



2-SLOPE INSTALLED

with module inclination of 10° to EAST/WEST

Alternating slopes to favour a high level of production over a wider daily hourly range.

Ideal for auto-consumption.

DOCUMENTATION & CERTIFICATION

- > ILLUSTRATED INSTALLATION GUIDE
- > BIM OBJECT AVAILABLE
- > PATENTED SYSTEM



SPECIFICATIONS VALIDATED BY SOCOTEC AS PART OF A NEW TECHNOLOGY SURVEY



AXTER designs, manufactures and markets waterproofing processes (bituminous, PVC, S.E.L.) for flat or sloped roofs as well as for Public Works and Civil Engineering projects. These sealing systems also include all the complementary products and accessories necessary for their implementation.

AXTER generates more than 40% of its turnover through exports to over 50 countries worldwide. Our commercial and technical teams are committed to assist you and, as true partners, accompany you at every stage of your projects.

Avec vous, par dessus tout

HEAD OFFICE

France and International Trade
143, avenue de Verdun
92130 Issy les Moulineaux
Tél. 33 (0)1 55 95 45 50
info@axter.eu

FACTORY AND CUSTOMER SERVICE FRANCE

Rue Joseph Coste
F-59552 Courchelettes
Tél. +33 (0)3 27 93 10 20
serviceclients@axter.eu

TECHNICAL GUIDANCE

Rue Joseph Coste
F-59552 Courchelettes
Tél. +33 (0)3 27 93 78 93
conseil-technique@axter.eu

AXTER IBÉRICA

Apdo. de Correos 180 - P.I. Ca N'IIlla
Avda. Jacint Verdaguer, 26
08530 La Garriga - Barcelona - España
Tél. +34 93 871 7333
info@axter.es

AXTER LIMITED

West Road Ransomes Europark
Ipswich - Suffolk - IP3 9 SX
United Kingdom
Tél. +44 1 4737 240 56
info@axterltd.co.uk

AXTER CENTRAL, NORTHERN AND EASTERN EUROPE, CIS, CENTRAL ASIA

33 rue des 3 Frontières
68110 Illzach, France
Tél. +33 (0)3 89 61 51 61
info@axter.de

AXTER CZECH REPUBLIC, SLOVAKIA

Eliášova 20 - 160 00 Praha 6
Czech Republic
Tél. +420 222 951 195
info@axter.info

AXTER CHILI

La concepción, 65,
Oficina 904 Providencia
7500010 Santiago de Chile, Chile
Tél. +(56-22) 236 99 39
info@axter.es

AXTER AUSTRALIA

Suite 1302 - 13th floor
50 Cavill Avenue
4217 Gold Coast, Australia
Tél. +61 (7) 56 35 44 89
info@axter.com.au

AXTER COLETANCHE INC.

1500 rue du Collège - Suite 205
Saint-Laurent, QC H4L 5G6 - Canada
Tél. +1 (514) 903-1912
info@axtercoletanche.com

www.axter.eu